

GM862-QUAD / PY Hardware User Guide

GM862-QUAD-PY, GM862-QUAD HW User Guide
1v0300748 Rev. 5 - 20/09/07



GM862-QUAD / PY Hardware User Guide
1v0300748 Rev. 5 - 20/09/07

This document is relating to the following products:


GM862-QUAD Modem
GM862-QUAD-PY Modem
GM862-QUAD 3 990 250 659
GM862-QUAD-PY 3 990 250 658



DISCLAIMER

The information contained in this document is the proprietary information of Telit Communications S.p.A. and its affiliates ("TELIT"). The contents are confidential and any disclosure to persons other than the officers, employees, agents or subcontractors of the owner or licensee of this document, without the prior written consent of Telit, is strictly prohibited.

Telit makes every effort to ensure the quality of the information it makes available. Notwithstanding the foregoing, Telit does not make any warranty as to the information contained herein, and does not accept any liability for any injury, loss or damage of any kind incurred by use of or reliance upon the information.

Telit disclaims any and all responsibility for the application of the devices characterized in this document, and notes that the application of the device must comply with the safety standards of the applicable country, and where applicable, with the relevant wiring rules.

Telit reserves the right to make modifications, additions and deletions to this document due to typographical errors, inaccurate information, or improvements to programs and/or equipment at any time and without notice. Such changes will, nevertheless be incorporated into new editions of this document.

All rights reserved.

© 2006 - 2007 Telit Communications S.p.A.

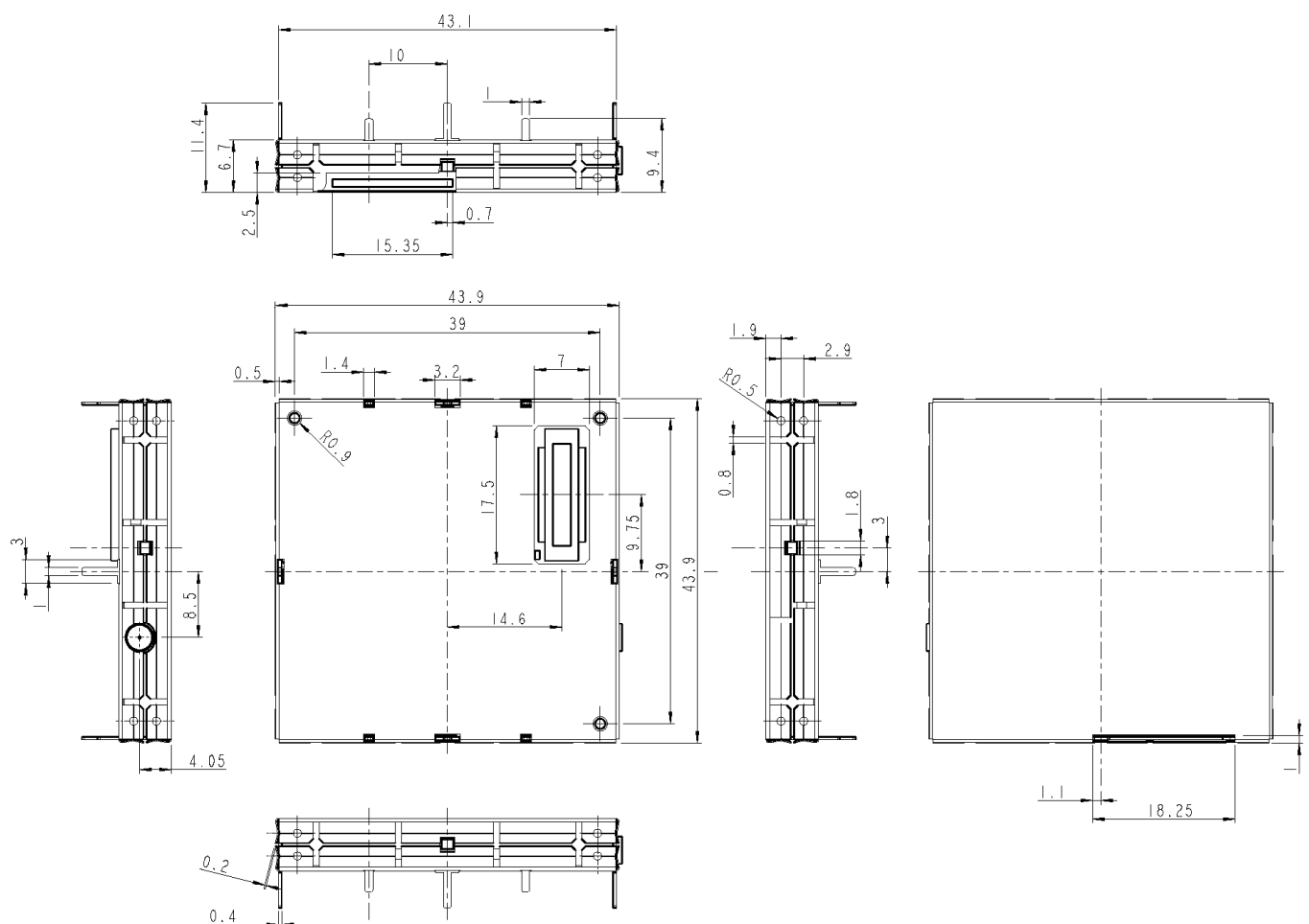


2 Dimensions

The **Telit GM862-QUAD / PY module** overall dimension are:

- **Length:** **43.9 mm**
- **Width:** **43.9 mm**
- **Thickness:** **6.9 mm**
- **Volume:** **$\cong 13 \text{ cm}^3$**

The layout is shown in the following figure:



3 Interface connectors on GM862-QUAD / PY

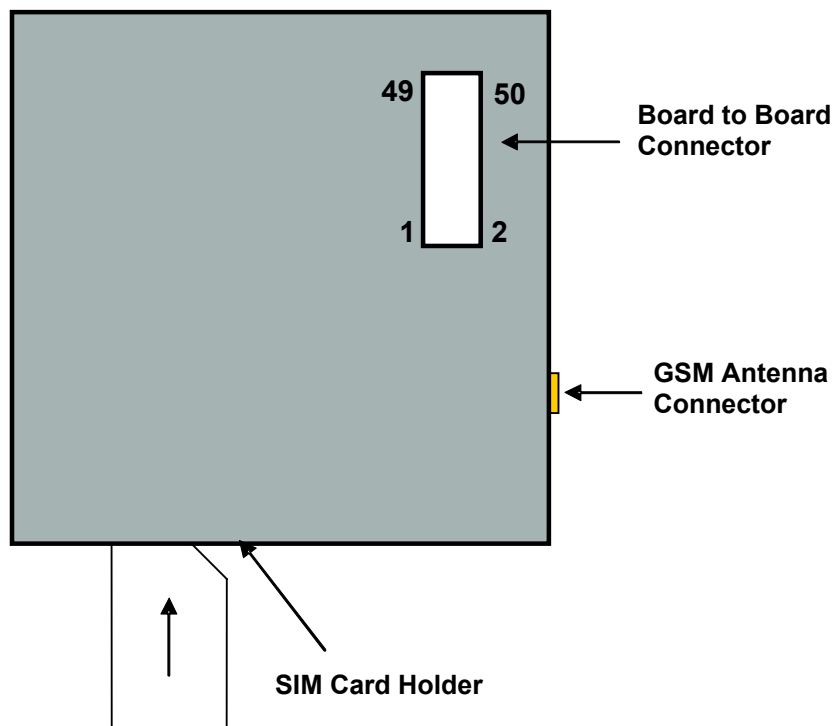
3.1 Description

The [Telit GM862-QUAD / PY](#) is provided of the following interfaces:

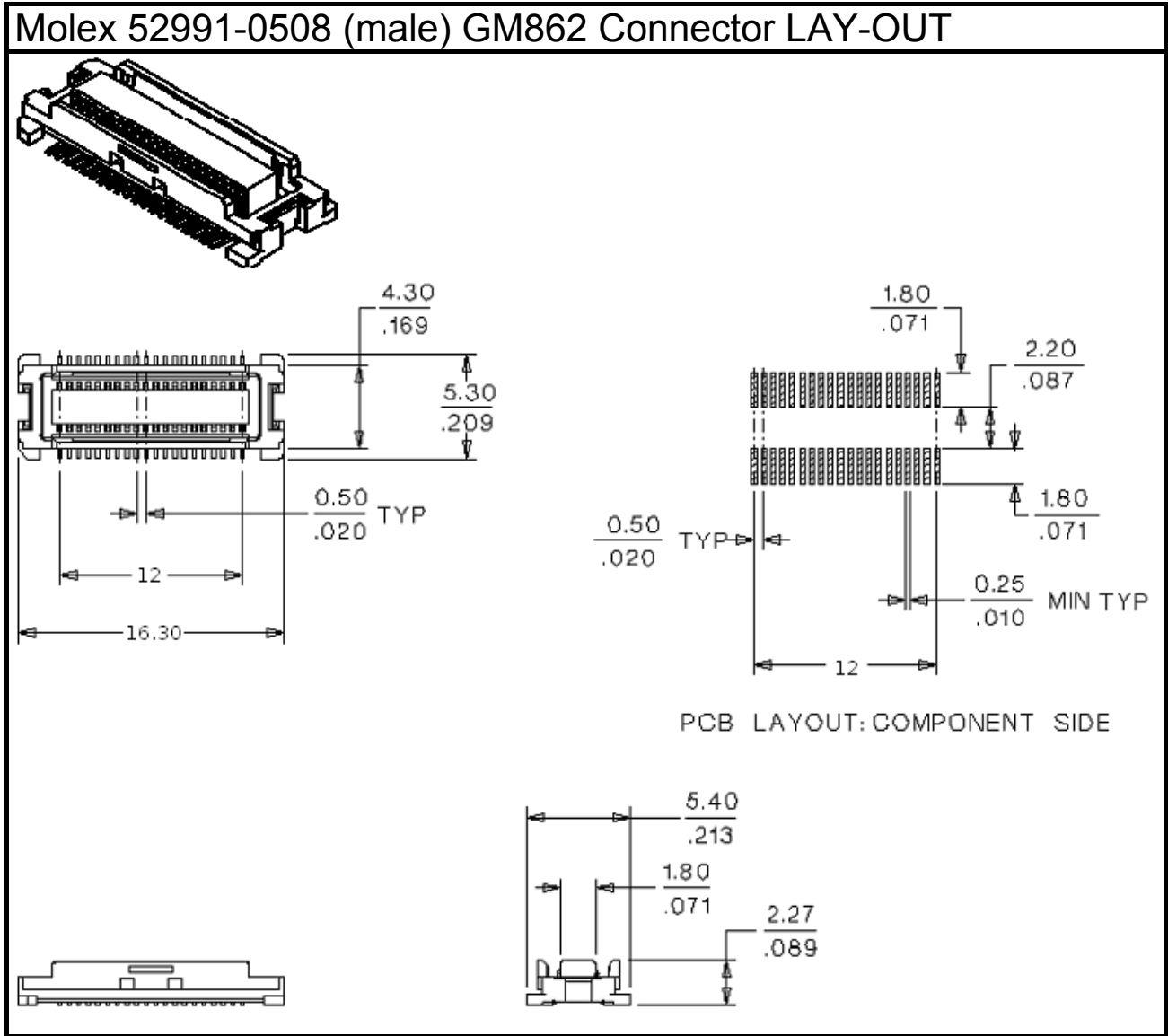
- **GSM antenna connector**
- **Board To Board Interface connector**
- **SIM Card Reader**

The [Telit GM862-QUAD / PY](#) board to board connector is a CSTP 50 pin vertical SMD Molex 52991–0508 (male).

3.2 Connectors Position



3.3 Board to Board Connector



3.3.1 Molex 52991-0508 (male) GM862 Connector PIN-OUT

Pin	Signal	I/O	Function	Internal Pull up	Type
1	VBATT	-	Main power supply		Power
2	GND	-	Ground		Power
3	VBATT	-	Main power supply		Power
4	GND	-	Ground		Power
5	VBATT	-	Main power supply		Power
6	A/D	-	A/D converter @ 11 bit (Input Impedance >100Kohm)		Max 2V input
7	VBATT	-	Main power supply		Power
8	CHARGE	AI	Battery Charger Input		Power
9	EAR_HF+	AO	Handsfree ear output, phase +		Audio
10	EAR_MT-	AO	Handset earphone signal output, phase -		Audio
11	EAR_HF-	AO	Handsfree ear output, phase -		Audio
12	EAR_MT+	AO	Handset earphone signal output, phase +		Audio
13	MIC_HF-	AI	Handsfree microphone input; phase -		Audio
14	MIC_MT+	AI	Handset microphone signal input; phase+		Audio
15	MIC_HF+	AI	Handsfree microphone input; phase +		Audio
16	MIC_MT-	AI	Handset microphone signal input; phase-		Audio
17	ON_OFF	I	Input command for switching power ON or OFF (toggle command).	47K Ω	Pull Up to VBATT
18	AXE	I	Handsfree switching	100K Ω	CMOS 2.8V
19	SIMIO	I/O	External SIM signal - Data I/O		1.8V/3V ONLY
20	C103/TXD	I	Serial data input (TXD) from DTE		CMOS 2.8V
21	PWRMON	O	Module Status ON indication (Signal output for power on/off control of external devices)	1K Ω	CMOS 2.8V
22	SIMVCC	-	External SIM signal – Power (3)		1.8V/3V ONLY
23	RESET	I	Reset input		-
24	SIMRST	O	External SIM signal – Reset		1.8V/3V ONLY
25	RESERVED	-	Reserved		-
26	SIMCLK	O	External SIM signal – Clock		1.8V/3V ONLY
27	SIMIN	I/O	External SIM signal – Presence (active low)	47K Ω	CMOS 2.8V
28	GPO2 / JDR	O	General purpose output (Open Collector) / Jammer Detect Report		Open Collector
29	C106/CTS	O	Output for Clear to send signal (CTS) to DTE		CMOS 2.8V
30	C125/RING	O	Output for Ring indicator signal (RI) to DTE		CMOS 2.8V
31	GPI1	I	General purpose input		transistor base
32	GPIO8	I/O	Configurable general purpose I/O pin		CMOS 2.8V



GM862-QUAD / PY Hardware User Guide

1v0300748 Rev. 5 - 20/09/07

Pin	Signal	I/O	Function	Internal Pull up	Type
33	C107/DSR	O	Output for Data set ready signal (DSR) to DTE		CMOS 2.8V
34	GPIO9	I/O	Configurable general purpose I/O pin		CMOS 2.8V
35	TX_TRACE	O	RESERVED on GM862-QUAD, Python Debug on GM862-QUAD-PY (TX data)		CMOS 2.8V
36	C109/DCD	O	Output for Data carrier detect signal (DCD) to DTE		CMOS 2.8V
37	C104/RXD	O	Serial data output to DTE		CMOS 2.8V
38	GPIO10	I/O	Configurable general purpose I/O		CMOS 2.8V
39	STAT_LED	O	Status indicator led		Open Collector
40	GPIO11	I/O	Configurable general purpose I/O pin	4.7 Kohm	CMOS 2.8V
41	RX_TRACE	I	RESERVED on GM862-QUAD, Python Debug on GM862-QUAD-PY (RX data)		CMOS 2.8V
42	GPIO12	I/O	Configurable general purpose I/O pin	47 Kohm	CMOS 2.8V
43	C108/DTR	I	Input for Data terminal ready signal (DTR) from DTE		CMOS 2.8V
44	GPIO13	I/O	Configurable general purpose I/O pin		CMOS 2.8V
45	C105/RTS	I	Input for Request to send signal (RTS) from DTE		CMOS 2.8V
46	GPIO3	I/O	Configurable general purpose I/O pin	47 Kohm	CMOS 2.8V
47	GPIO4	I/O	Configurable general purpose I/O pin / TX Disable Control	4.7 Kohm	CMOS 2.8V
48	GPIO5 / RFTXMON	I/O	Configurable general purpose I/O pin / Transmitter ON Monitor		CMOS 2.8V
49	GPIO6 / ALARM	I/O	Configurable general purpose I/O pin / ALARM		CMOS 2.8V
50	GPIO7 / BUZZER	I/O	Configurable general purpose I/O pin / BUZZER		CMOS 2.8V

- (1) For the exclusive use of the Technical Support Service
- (2) An earphone with a 150 ohm impedance can be directly connected to EAR+ and EAR-
- (3) On this pin a maximum of 10nF bypass capacitor is allowed.

Note: If not used, almost all pins should be left disconnected. The only exceptions are the following pins:

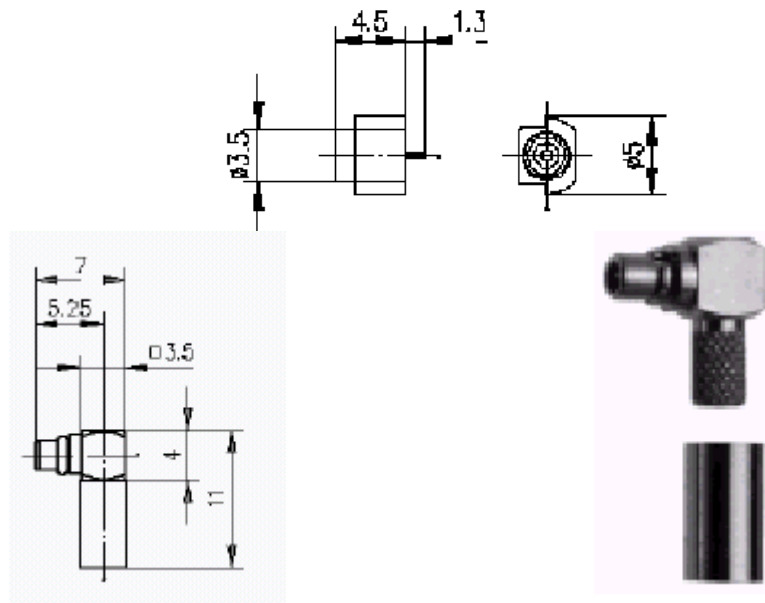
pin	signal
1,3,5,7	VBATT
2,4,8	GND
17	ON/OFF*
20	TXD
23	RESET*
37	RXD
45	RTS ¹

¹ RTS should be connected to the GND (on the module side) if flow control is not used



3.3.2 Antenna Connector

The [Telit GM862-QUAD / PY](#) includes one 50 Ohm MMCX coaxial female RF connector. On the user application side the following connector must be used:



a) Telegärtner MMCX angle plug crimp - Order n. J01340A0121

NOTE: be very careful when connecting the [Telit GM862-QUAD/PY](#) RF connector. The RF connector can be damaged if not connected with the proper antenna RF connector. The minimum number of insertion cycles are recommended.



4 Antenna

4.1 GSM Antenna Requirements

The antenna for a Telit GM862-QUAD/PY device shall fulfill the following requirements:

Frequency range	Depending by frequency band(s) provided by the network operator, the customer shall use the most suitable antenna for that/those band(s)
Bandwidth	80 MHz in EGSM 900, 70 MHz if GSM 850, 170 MHz in DCS, 140 MHz PCS band
Gain	Gain < 3dBi
Impedance	50 ohm
Input power	> 2 W peak power
VSWR absolute max	<= 10:1
VSWR recommended	<= 2:1

Furthermore if the device is developed for the US market and/or Canada market, it shall comply to the FCC and/or IC approval requirements:

This device is to be used only for mobile and fixed application. The antenna(s) used for this transmitter must be installed to provide a separation distance of at least 20 cm from all persons and must not be co-located or operating in conjunction with any other antenna or transmitter. End-Users must be provided with transmitter operation conditions for satisfying RF exposure compliance. OEM integrators must ensure that the end user has no manual instructions to remove or install the GM862-QUAD/PY module. Antennas used for this OEM module must not exceed 3dBi gain for mobile and fixed operating configurations.



4.2 GSM Antenna - Installation Guidelines

- Install the antenna in a place covered by the GSM signal.
- The Antenna must be installed to provide a separation distance of at least 20 cm from all persons and must not be co-located or operating in conjunction with any other antenna or transmitter;
- Antenna shall not be installed inside metal cases
- Antenna shall be installed also according Antenna manufacturer instructions.

4.3 Logic level specifications

Where not specifically stated, all the interface circuits work at 2.8V CMOS logic levels. The following table shows the logic level specifications used in the [Telit GM862-QUAD/PY](#) interface circuits:

Absolute Maximum Ratings -Not Functional

Parameter	Min	Max
Input level on any digital pin when on	-0.3V	+3.6V
Input voltage on analog pins when on	-0.3V	+3.0 V
Voltage on Buffered pins	-0.3V	25V

Operating Range - Interface levels (2.8V CMOS)

Level	Min	Max
Input high level	2.1V	3.3V
Input low level	0V	0.5V
Output high level	2.2V	3.0V
Output low level	0V	0.35V

For 2,0V signals:

Operating Range - Interface levels (2.0V CMOS)

Level	Min	Max
Input high level	1.6V	3.3V
Input low level	0V	0.4V
Output high level	1,65V	2.2V
Output low level	0V	0.35V



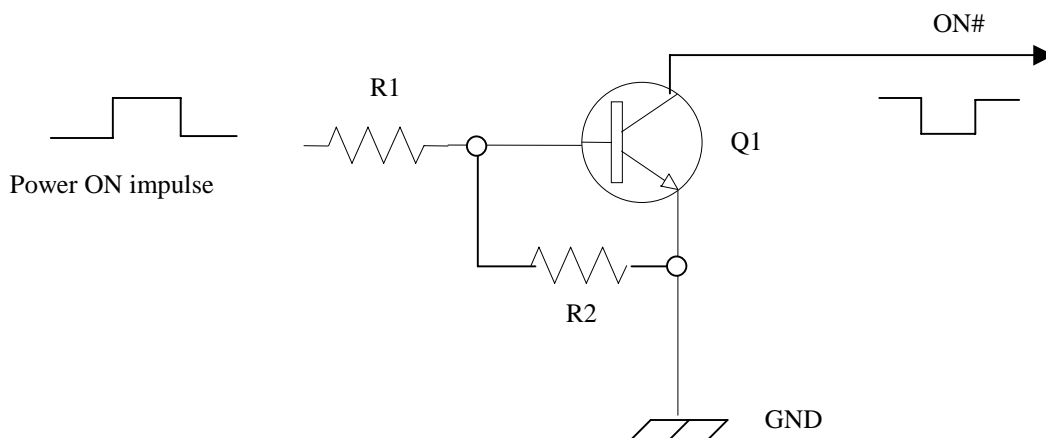
5 Hardware Commands

5.1 Turning ON the GM862-QUAD / PY

To turn on the GM862-QUAD / PY the pin ON# must be tied low for at least 1 second and then released.

The maximum current that can be drained from the ON# pin is 0,1 mA.

A simple circuit to do it is:



NOTE: don't use any pull up resistor on the ON# line, it is internally pulled up. Using pull up resistor may bring to latch up problems on the GM862-QUAD / PY power regulator and improper power on/off of the module. The line ON# must be connected only in open collector configuration.

NOTE: The GM862-QUAD/PY turns fully on also by supplying power to the Charge pad (Module provided with a battery on the VBATT pads).

TIP: To check if the device has powered on, the hardware line PWRMON should be monitored. After 900ms the line raised up the device could be considered powered on. PWRMON line rises up also when supplying power to the Charge pad

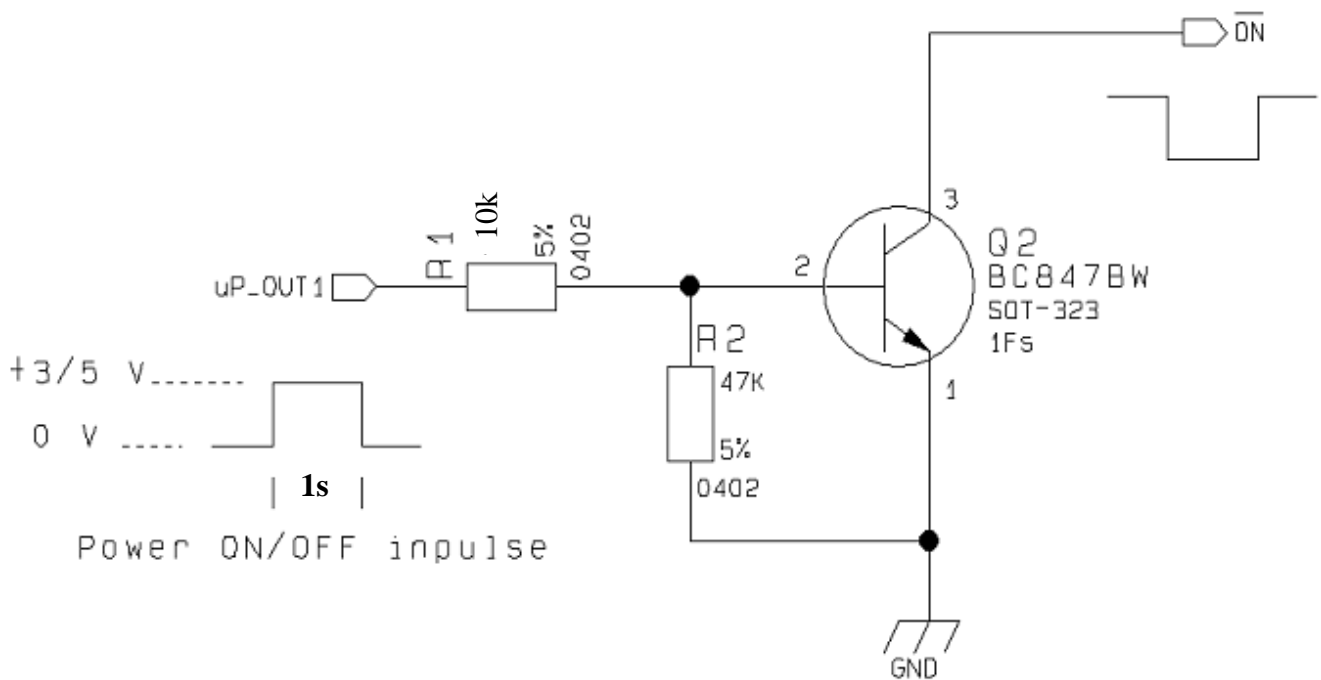


GM862-QUAD / PY Hardware User Guide

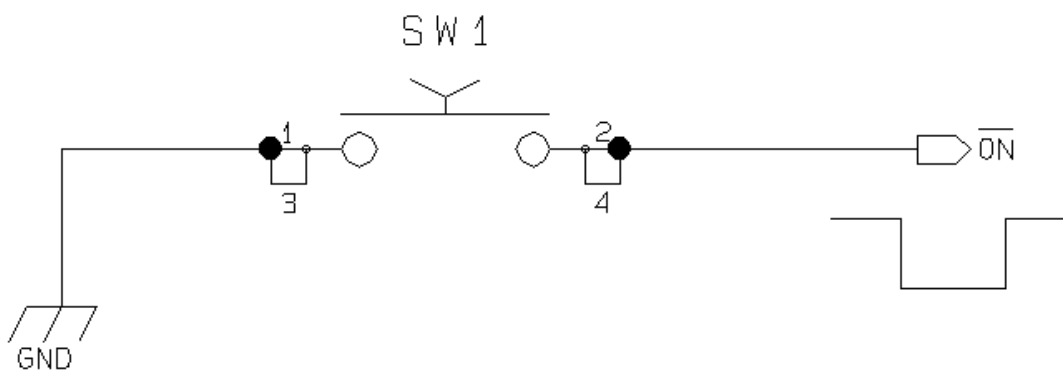
1v0300748 Rev. 5 - 20/09/07

For example:

1- Let's assume you need to drive the ON# pin with a totem pole output of a +3/5 V microcontroller (uP_OUT1):

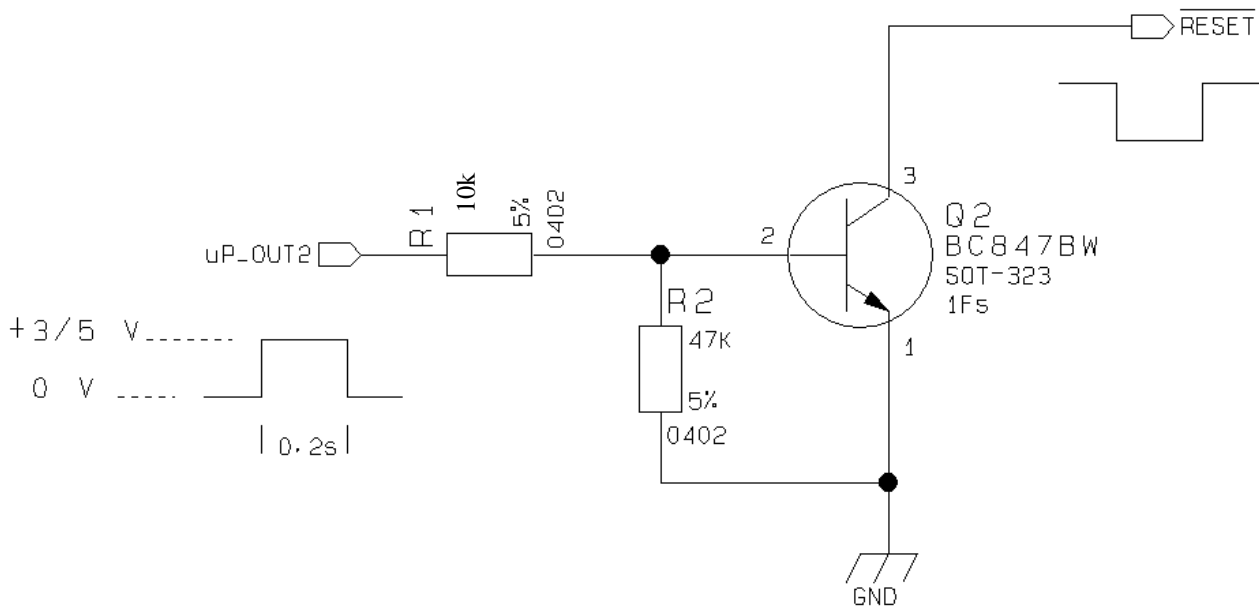


2- Let's assume you need to drive the ON# pin directly with an ON/OFF button:



For example:

1- Let's assume you need to drive the RESET# pin with a totem pole output of a +3/5 V microcontroller (uP_OUT2):



The hardware unconditional restart must not be used during normal operation of the device since it does not detach the device from the network. It shall be kept as an emergency exit procedure to be done in the rare case that the device gets stacked waiting for some network or SIM responses. If device does not respond to a command in the timeout window, retry issuing the command and if still no response is received a hardware reset shall be issued.



6 Power Supply

The power supply circuitry and board layout are the most important part in the full product design and they strongly reflect on the product overall performances, hence read carefully the requirements and the guidelines that will follow for a proper design.

6.1 Power Supply Requirements

POWER SUPPLY	
Nominal Supply Voltage	3.8 V
Max Supply Voltage	4.2 V
Supply voltage range	3.4 V - 4.2 V

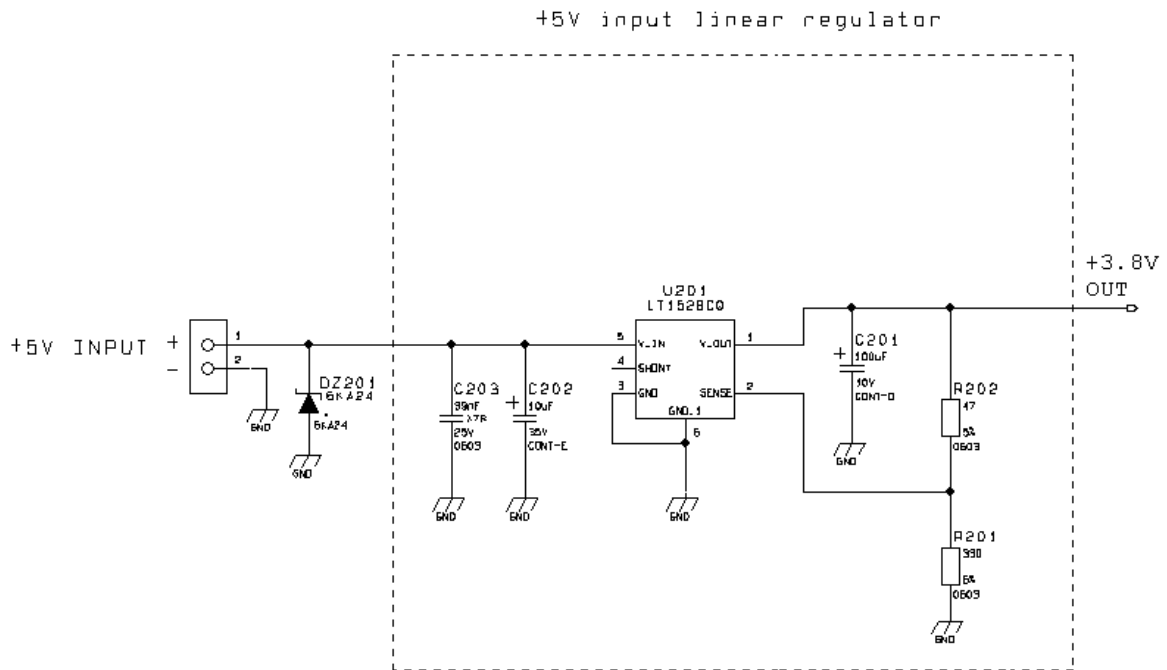
CONSUMPTIONS		
Mode	Average (mA)	Mode description
IDLE mode		
AT+CFUN=1	23,9	Stand by mode; no call in progress
AT+CFUN=4	22	Normal mode: full functionality of the module Disabled TX and RX; module is not registered on the network
AT+CFUN=0 or AT+CFUN=5	7,20 / 3,56 ²	Power saving: CFUN=0 module registered on the network and can receive voice call or an SMS; but it is not possible to send AT commands; module wakes up with an unsolicited code (call or SMS) or rising RTS line. CFUN=5 full functionality with power saving; module registered on the network can receive incoming calls and SMS
RX mode		
1 slot in downlink	52,3	GSM Receiving data mode
2 slot in downlink	65,2	
3 slot in downlink	78,6	
4 slot in downlink	88,4	
GSM TX and RX mode		
Min power level	78,1	GSM Sending data mode
Max power level	200,1	
GPRS (class 10) TX and RX mode		
Min power level	123,7	GPRS Sending data mode
Max power level	370,8	

The GSM system is made in a way that the RF transmission is not continuous, else it is packed into bursts at a base frequency of about 216 Hz, the relative current peaks can be as high as about 2A. Therefore the power supply has to be designed in order to withstand with these current peaks without big voltage drops; this means that both the electrical design and the board layout must be designed for this current flow.

¹ Worst/best case depends on network configuration and is not under module control



An example of linear regulator with 5V input is:



6.2.1.2 + 12V input Source Power Supply Design Guidelines

- The desired output for the power supply is 3.8V, hence due to the big difference between the input source and the desired output, a linear regulator is not suited and shall not be used. A switching power supply will be preferable because of its better efficiency especially with the 2A peak current load represented by the GM862-QUAD / PY.
- When using a switching regulator, a 500Khz switching frequency regulator is preferable because of its smaller inductor size and its faster transient response. This allows the regulator to respond quickly to the current peaks absorption.
- In any case the frequency and Switching design selection is related to the application to be developed due to the fact the switching frequency could also generate EMC interferences.
- For car PB battery the input voltage can rise up to 15,8V and this should be kept in mind when choosing components: all components in the power supply must withstand this voltage.
- A Bypass low ESR capacitor of adequate capacity must be provided in order to cut the current absorption peaks, a 100 μ F tantalum capacitor is usually suited.
- Make sure the low ESR capacitor on the power supply output (usually a tantalum one) is rated at least 10V.
- For Car applications a spike protection diode should be inserted close to the power input, in order to clean the supply from spikes.
- A protection diode should be inserted close to the power input, in order to save the GM862-QUAD / PY from power polarity inversion. This can be the same diode as for spike protection.



GM862-QUAD / PY Hardware User Guide

1vv0300748 Rev. 5 - 20/09/07

When the charging current falls below a certain fraction of the fast charge current value, then the battery is considered fully charged, the final charge stops and eventually starts the maintenance.

The pulsed charge process has no voltage regulation, instead the charge continues with pulses. Usually the pulse charge works in the following manner: the charge is stopped for some time, let's say few hundreds of ms, then the battery voltage will be measured and when it drops below its maximum value a fixed time length charging pulse is issued. As the battery approaches its full charge the off time will become longer, hence the duty-cycle of the pulses will decrease. The battery is considered fully charged when the pulse duty-cycle is less than a threshold value, typically 10%, the pulse charge stops and eventually the maintenance starts.

The last phase is not properly a charging phase, since the battery at this point is fully charged and the process may stop after the final charge. The maintenance charge provides an additional charging process to compensate for the charge leak typical of a Li-Ion battery. It is done by issuing pulses with a fixed time length, again few hundreds of ms, and a duty-cycle around 5% or less.

This last phase is not implemented in the GM862-QUAD / PY internal charging algorithm, so that the battery once charged is left discharging down to a certain threshold so that it is cycled from full charge to slight discharge even if the battery charger is always inserted. This guarantees that anyway the remaining charge in the battery is a good percentage and that the battery is not damaged by keeping it always fully charged (Li-Ion rechargeable battery usually deteriorates when kept fully charged).

Last but not least, in some applications it is highly desired that the charging process restarts when the battery is discharged and its voltage drops below a certain threshold, GM862-QUAD / PY internal charger does it.

As you can see, the charging process is not a trivial task to be done; moreover all these operations should start only if battery temperature is inside a charging range, usually 5°C - 45°C.

The GM862-QUAD / PY measures the temperature of its internal component, in order to satisfy this last requirement, it's not exactly the same as the battery temperature but in common application the two temperature should not differ too much and the charging temperature range should be guaranteed.



NOTE: In this particular application the battery charger input current must be limited to less than 1A. Using a current limited wall adapter as the power source can do this.

For your convenience in the EVK there's also a current unlimited input, where the input source is not limited in current and the drawn current is limited to about 0,5A by a MOSFET in the EVK.

The external battery charger is suggested in applications where the total consumption is higher than the current provided by the GM862-QUAD / PY module.



NOTE: For all the threshold voltages, inside the GM862-QUAD / PY all threshold are fixed in order to maximize Li-Ion battery performances and do not need to be changed.



NOTE: In this application the battery charger input current must be limited to less than 400mA. This can be done by using a current limited wall adapter as the power source.



NOTE: When starting the charger from Module powered off the startup will be in CFUN4; to activate the normal mode a command AT+CFUN=1 has to be provided. This is also possible using the POWER ON.

There is also the possibility to activate the normal mode using the ON_OFF* signal.

In this case, when HW powering off the module with the same line (ON_OFF*) and having the charger still connected, the module will go back to CFUN4.



7 Serial Ports

The serial port on the Telit GM862-QUAD / PY is the core of the interface between the module and OEM hardware.

2 serial ports are available on the module:

- MODEM SERIAL PORT
- TRACE (Usable only on GM862-QUAD-PY for Python Debug)

Several configurations can be designed for the serial port on the OEM hardware, but the most common are:

- RS232 PC com port
- microcontroller UART @ 2.8V - 3V (Universal Asynchronous Receive Transmit)
- microcontroller UART@ 5V or other voltages different from 2.8V

Depending from the type of serial port on the OEM hardware a level translator circuit may be needed to make the system work. The only configuration that doesn't need a level translation is the 2.8V UART.

The TRACE Serial Port is a 3 wire (RX, TX GND) +2.8V UART.

The MODEM serial port on the GM862-QUAD / PY is a +2.8V UART with all the 7 RS232 signals. It differs from the PC-RS232 in the signal polarity (RS232 is reversed) and levels. The levels for the GM862-QUAD / PY UART are the CMOS levels:

Absolute Maximum Ratings -Not Functional

Parameter	Min	Max
Input level on any digital pin when on	-0.3V	+3.6V
Input voltage on analog pins when on	-0.3V	+3.0 V

Operating Range - Interface levels (2.8V CMOS)

Level	Min	Max
Input high level V_{IH}	2.1V	3.3V
Input low level V_{IL}	0V	0.5V
Output high level V_{OH}	2.2V	3.0V
Output low level V_{OL}	0V	0.35V



7.1 Level translation

In order to interface the Telit GM862-QUAD / PY with a PC com port or a RS232 (EIA/TIA-232) application a level translator is required. This level translator must

- invert the electrical signal in both directions
- change the level from 0/3V to +15/-15V

Actually, the RS232 UART 16450, 16550, 16650 & 16750 chipsets accept signals with lower levels on the RS232 side (EIA/TIA-562) , allowing for a lower voltage-multiplying ratio on the level translator. Note that the negative signal voltage must be less than 0V and hence some sort of level translation is always required.

The simplest way to translate the levels and invert the signal is by using a single chip level translator. There are a multitude of them, differing in the number of driver and receiver and in the levels (be sure to get a true RS232 level translator not a RS485 or other standards).

By convention the driver is the level translator from the 0-3V UART level to the RS232 level, while the receiver is the translator from RS232 level to 0-3V UART.

In order to translate the whole set of control lines of the UART you will need:

- 5 driver
- 3 receiver



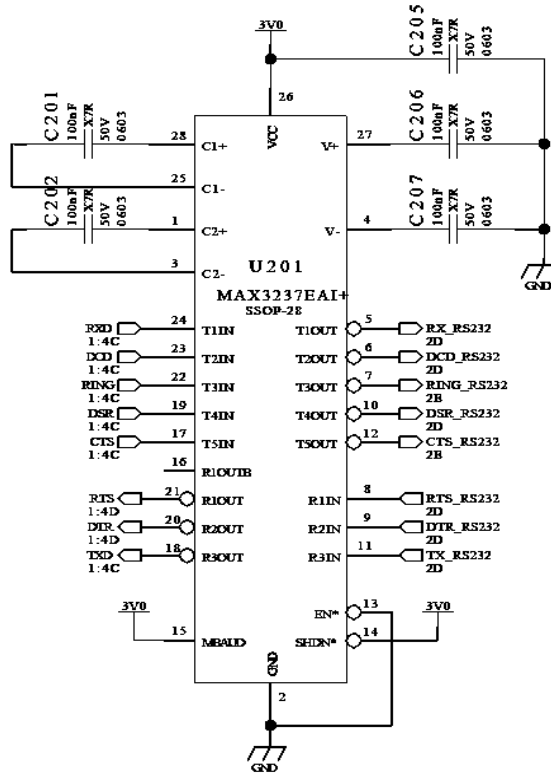
NOTE: The digital input lines working at 2.8VCMOS have an absolute maximum input voltage of 3,75V; therefore the level translator IC shall not be powered by the +3.8V supply of the module. Instead it shall be powered from a +2.8V / +3.0V (dedicated) power supply.

This is because in this way the level translator IC outputs on the module side (i.e. GM862-QUAD / PY inputs) will work at +3.8V interface levels, stressing the module inputs at its maximum input voltage.

This can be acceptable for evaluation purposes, but not on production devices.

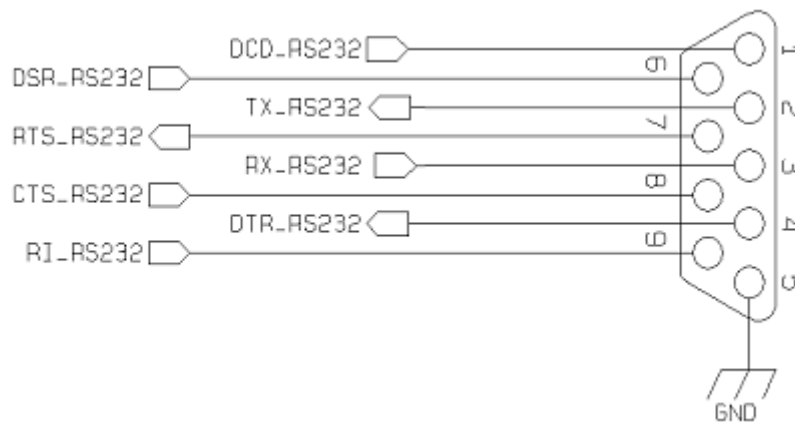


An example of level translation circuitry of this kind is:



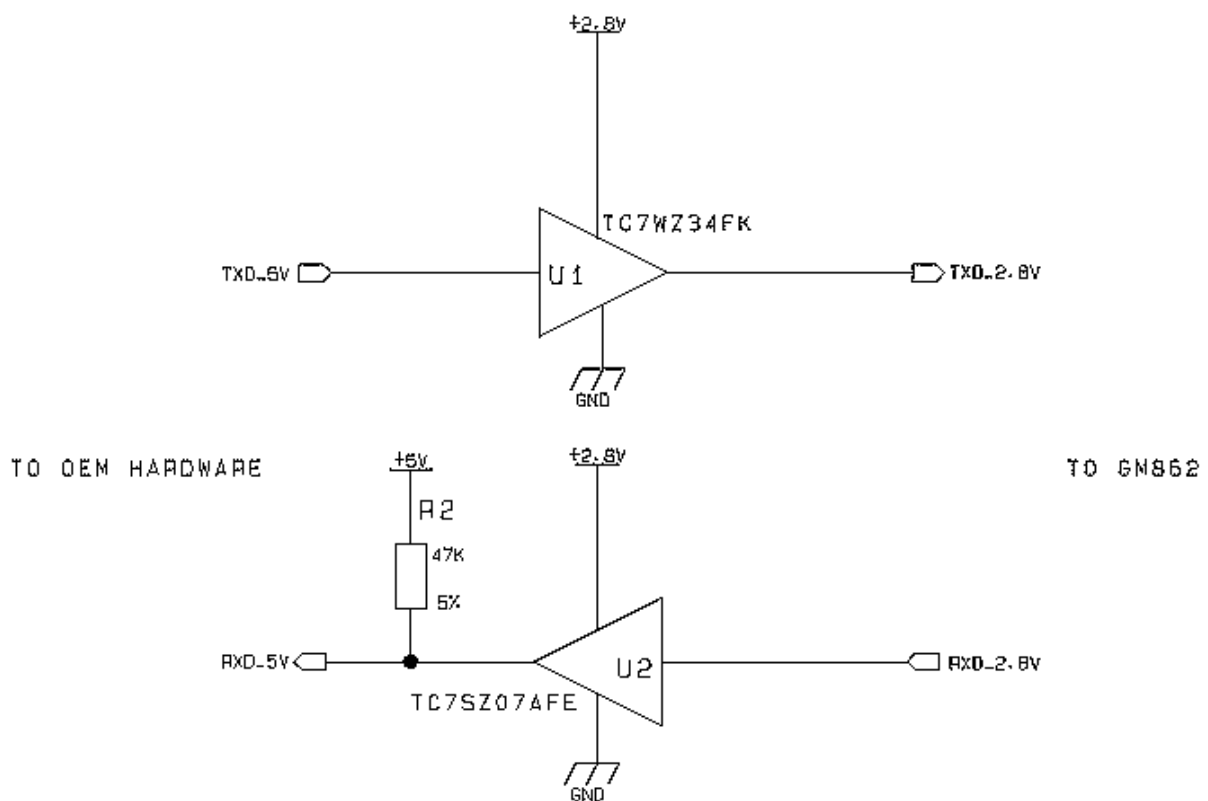
RS232 LEVEL TRSANSULATOR

the RS232 serial port lines are usually connected to a DB9 connector with the following layout:



7.2 5V UART level translation

If the OEM application uses a microcontroller with a serial port (UART) that works at a voltage different from 2.8 - 3V, then a circuitry has to be provided to adapt the different levels of the two set of signals. As for the RS232 translation there are a multitude of single chip translators. For example a possible translator circuit for a 5V TRANSMITTER/RECEIVER can be:



TIP: This logic IC for the level translator and 2.8V pull-ups (not the 5V one) can be powered directly from PWRMON line of the GM862-QUAD / PY. Note that the TC7SZ07AE has open drain output, therefore the resistor R2 is mandatory.



NOTE: The UART input line TXD (*rx_uart*) of the GM862-QUAD / PY is NOT internally pulled up with a resistor, so there may be the need to place an external 47K Ω pull-up resistor, either the DTR (*dtr_uart*) and RTS (*rts_uart*) input lines are not pulled up internally, so an external pull-up resistor of 47K Ω may be required.

A power source of the internal interface voltage corresponding to the 2.8VCMOS high level is available at the PWRMON pin on the connector, whose absolute maximum output current is 1mA.

A maximum of 9 resistors of 47 K Ω pull-up can be connected to the PWRMON pin, provided no other devices are connected to it and the pulled-up lines are GM862-QUAD / PY input lines connected to open collector outputs in order to avoid latch-up problems on the GM862-QUAD / PY.

Care must be taken to avoid latch-up on the GM862-QUAD / PY and the use of this output line to power electronic devices shall be avoided, especially for devices that generate spikes and noise such as switching level translators, micro controllers, failure in any of these condition can severely compromise the GM862-QUAD / PY functionality.

NOTE: The input lines working at 2.8VCMOS can be pulled-up with 47K Ω resistors that can be connected directly to the PWRMON line provided they are connected as in this example.
NO OTHER devices than those suggested should be powered with the PWRMON line; otherwise the module functionality may be compromised.

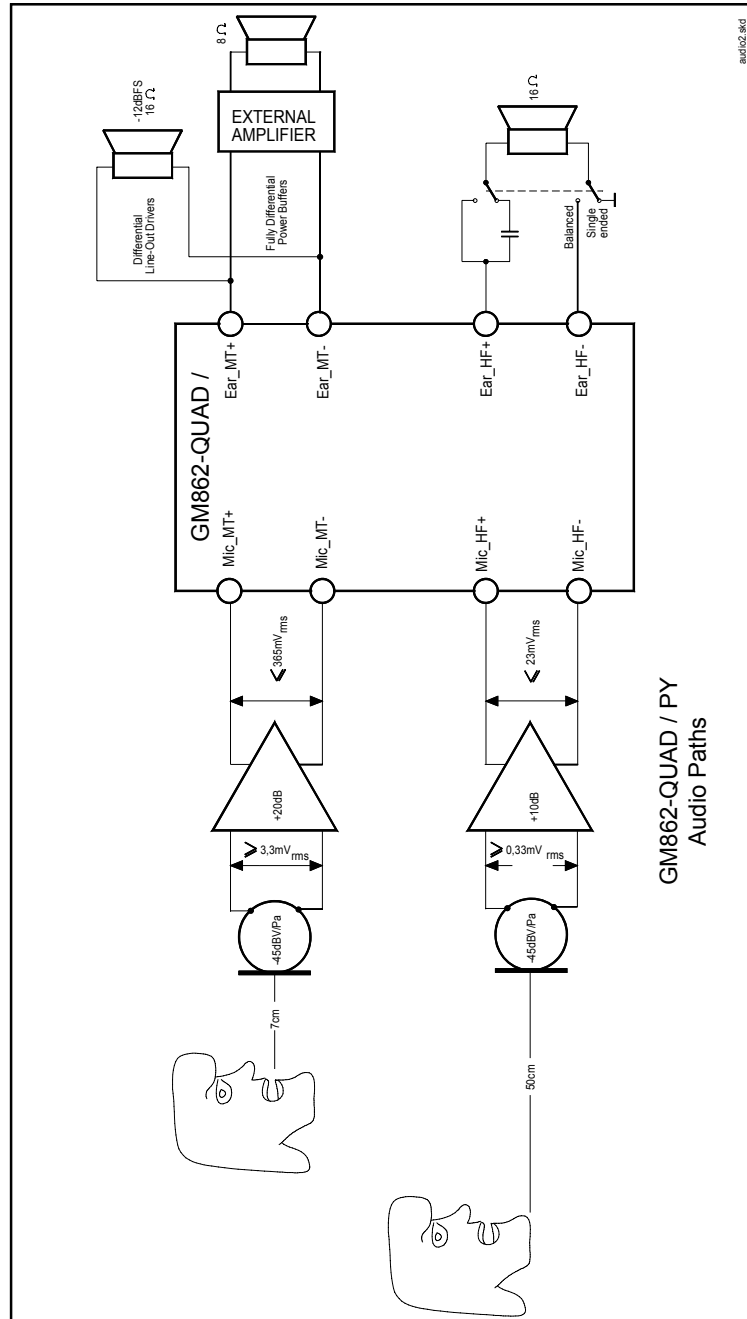
It is important to consider that the added circuit must have consumption lower than 1mA.

In case of reprogramming of the module has to be considered the use of the RESET line to start correctly the activity.

The preferable configuration is having an external supply for the buffer.



GM862-QUAD / PY Hardware User Guide
1v0300748 Rev. 5 - 20/09/07



8.1 Microphone Paths Characteristic and Requirements



TIP: being the microphone circuitry the more noise sensitive, its design and layout must be done with particular care. Both microphone paths are balanced and the OEM circuitry should be balanced designed to reduce the common mode noise typically generated on the ground plane. However also an unbalanced circuitry can be used for particular OEM application needs.



TIP: due to the difference in the echo canceller type, the “Mic_MT” audio path is suited for Handset applications, while the “Mic_HF” audio path is suited for hands-free function (car kit). The Earphone applications should be made using the “Mic_HF” audio path but **DISABLING** the echo canceller by software AT command. If the echo canceller is left active with the Earphone, then some echo might be introduced by the echo cancel algorithm.

“Mic_MT” 1st differential microphone path

- | | |
|-------------------------------------------------------------------------------------------------------------------------------------------------------------------------------------------------------------------------------------------------------------------------------------------------------------------------------------------------|-------------------------------------------------------------------------------------------------------------------------------|
| <ul style="list-style-type: none"> • line coupling • line type • coupling capacitor • differential input resistance • max differential input voltage (365mV_{rms})/@MicG=0 • microphone nominal sensitivity • analog gain suggested • echo canceller type | <p>AC (*)
balanced
≥ 100nF
50kΩ
1,03V_{pp}</p> <p>-45 dBV_{rms}/Pa
+ 20dB
handset</p> |
|-------------------------------------------------------------------------------------------------------------------------------------------------------------------------------------------------------------------------------------------------------------------------------------------------------------------------------------------------|-------------------------------------------------------------------------------------------------------------------------------|

“Mic_HF” 2nd differential microphone path

- | | |
|---------------------------------------------------------------------------------------------------------------------------------------------------------------------------------------------------------------------------------------------------------------------------------------------------------------------------|------------------------------------------------------------------------------------------------------------------------------------------------------------------|
| <ul style="list-style-type: none"> • line coupling • line type • coupling capacitor • differential input resistance • max differential input voltage @MicG=0 • microphone nominal sensitivity • analog gain suggested • echo canceller type | <p>AC (*)
balanced
≥ 100nF
50kΩ
1,03V_{pp} (365mV_{rms})</p> <p>-45 dBV_{rms}/Pa</p> <p>+10dB
car kit hands-free</p> |
|---------------------------------------------------------------------------------------------------------------------------------------------------------------------------------------------------------------------------------------------------------------------------------------------------------------------------|------------------------------------------------------------------------------------------------------------------------------------------------------------------|



$$[-49,7 + 20 + G_A] = -8,76$$

$$-40,9 + 20 = -G_A$$

$G_A = 20,94dB$ → you can set $G_A = +20dB$ to use standard resistor values .

TIP: environment consideration .

For *hands-free/car kit* microphone, you must take into account the voice attenuation, due to the distance between the microphone itself and the talker, when designing the external microphone amplifier.

Not only, you must consider that the microphone will pick up also ambient noise; to overcome this problem it is preferable to set the gain of the microphone *10dB* lower with respect to the calculated value for a nominal sensitivity. The corresponding reduction in signal level will be compensated by an increased voice volume of the talker which will speak louder because of the ambient noise.

For a car cabin usually the distance between the microphone itself and the talker is *40/50cm* ; in these conditions the attenuation can be considered as a thumb rule around *20dB* .

For the earphone we shall distinguish two different types: the earphones having the microphone sustained close to the mouth and the ones having the microphone on the earpiece cable.

The same considerations for the additional voice attenuation due to the distance from the microphone and the noise pick up can be made for the earphone having the microphone on the earpiece cable, while the other kind of earphone shall be threaten as an handset.

TIP: how to compensate the losses in car cabin hands-free condition.

The voice signal , that in the "normal spoken" conditions produces on the microphone membrane an acoustic pressure of -4,7dBPa at 1kHz , will have a further attenuation of 20dB due the 50cm distance .

Therefore a microphone having the suggested nominal sensitivity of -45dB_{rms}/Pa, will produce a lower electrical

equivalent signal :

$$MicLevel = (-45) + (-4.7) - 20 = -69.7$$

that means :

$$MicVoltage = 10^{(-49.7 / 20)} = 0,33 * 10^{-3}$$

Setting the "microphone gain" at +10dB (3 times), the signal in the nominal conditions on the "Mic_HF" inputs s of GM862-QUAD / PY Telit Module will be :

$$"Mic_HF" Level = 0,33 * 10^{-3} * 3 = 1 * 10^{-3}$$



Hence in these conditions the signal level on the “*Mic_HF*” input pads of the GM862-QUAD / PY is 10 dB (3 times) lower than the nominal, as suggested.

8.2 General Design Rules

There are several configurations for the audio paths, but the most effective difference is between balanced and unbalanced microphone configuration.

It is highly recommended to keep the whole microphone path balanced even if this means having 2 wires connecting the microphone instead of one needed (plus ground) in the unbalanced case. The balanced circuitry is more suited because of its good common mode noise rejection, reducing the 216 Hz burst noise produced during the GSM transmissions.

- Where possible use balanced microphone circuitry
- Keep the microphone traces on the PCB and wires as short as possible.
- If your application requires an unbalanced microphone, then keep the lines on the PCB balanced and "unbalance" the path close to the microphone wire connector if possible.
- For the microphone biasing voltage use a dedicated voltage regulator and a capacitor multiply circuit.
- Make sure that the microphone traces in the PCB don't cross or run parallel to noisy traces (especially the power line)
- If possible put all around to the microphone lines a ground trace connected to the ground plane by several vias. This is done in order to simulate a shielded trace on the PCB.
- The biasing circuit and eventually the buffer can be designed in the same manner for the internal and external microphones.

8.3 Other Considerations

If your application is a hands-free/car kit scenario, but you need to put microphone and speaker inside the same box:

- Try to have the maximum possible distance between them, at least 7cm;
- since the microphone type is very important, if you use an omni-directional one (and this is the typical application) please seal it on the rear side (no back cavity) in order not to collect unwanted signals ;
- try to make divergent the main axes of the two devices .



8.4 Microphone Biasing

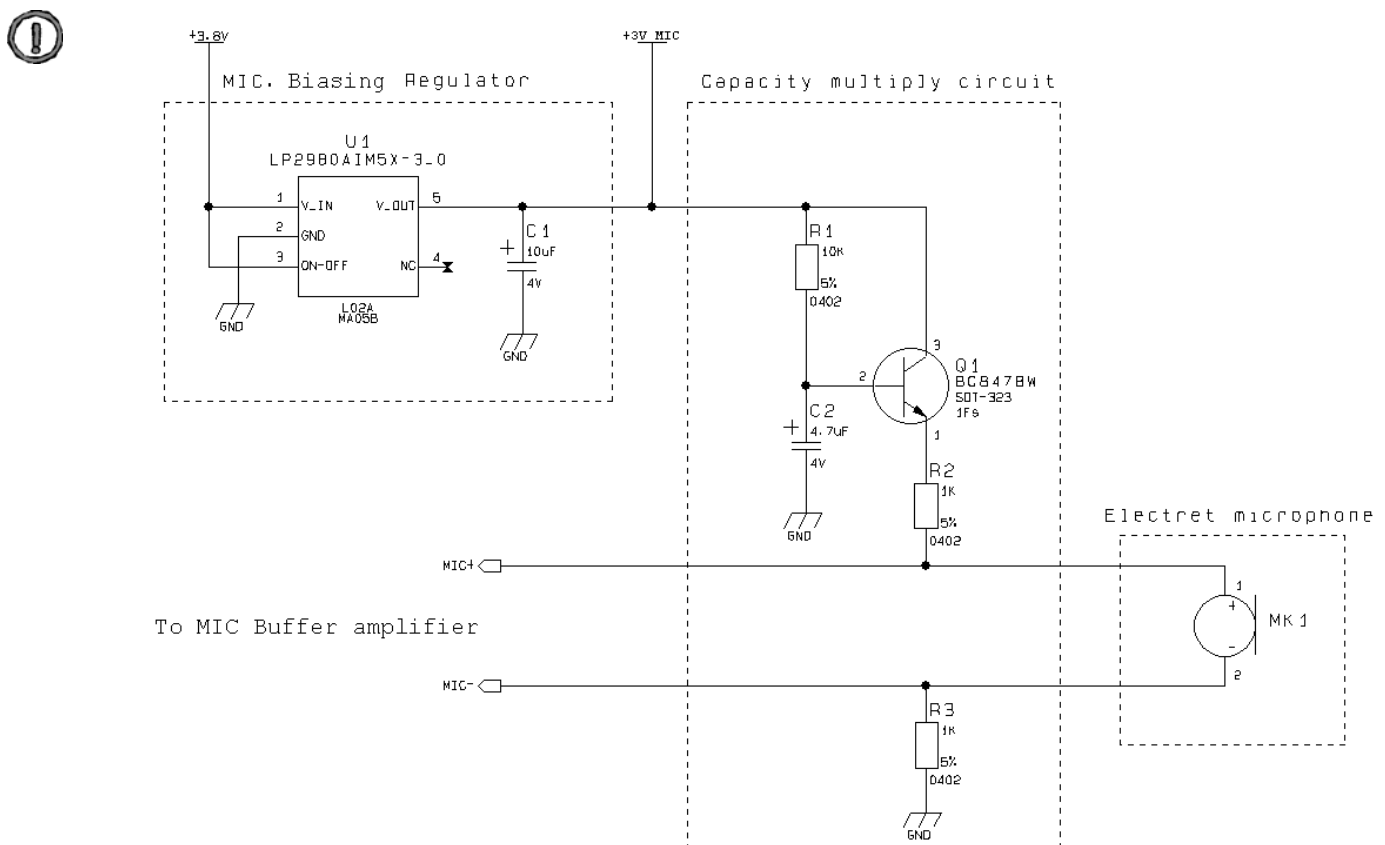
The electret microphones usually need a biasing voltage to work properly. Refer to your microphone provider for the characteristics required.

NOTE: The microphones have a hot wire were the positive biasing must be connected. Usually it is indicated by a + symbol or a red point. If the polarity of the bias is reversed, then the microphone will not work properly. For this reason be sure to respect the mic. biasing polarity.

8.4.1 Balanced Microphone Biasing

The balanced microphone bias voltage should be obtained from a dedicated voltage regulator, in order to eliminate the noise present on the power lines. This regulator can be the same for all the audio paths. The microphone should be supplied from a capacitor multiply circuit.

For example a circuit for the balanced microphone biasing can be:



NOTE: In the balanced application the resistors R2 and R3 must have the same value to keep the circuit balanced.



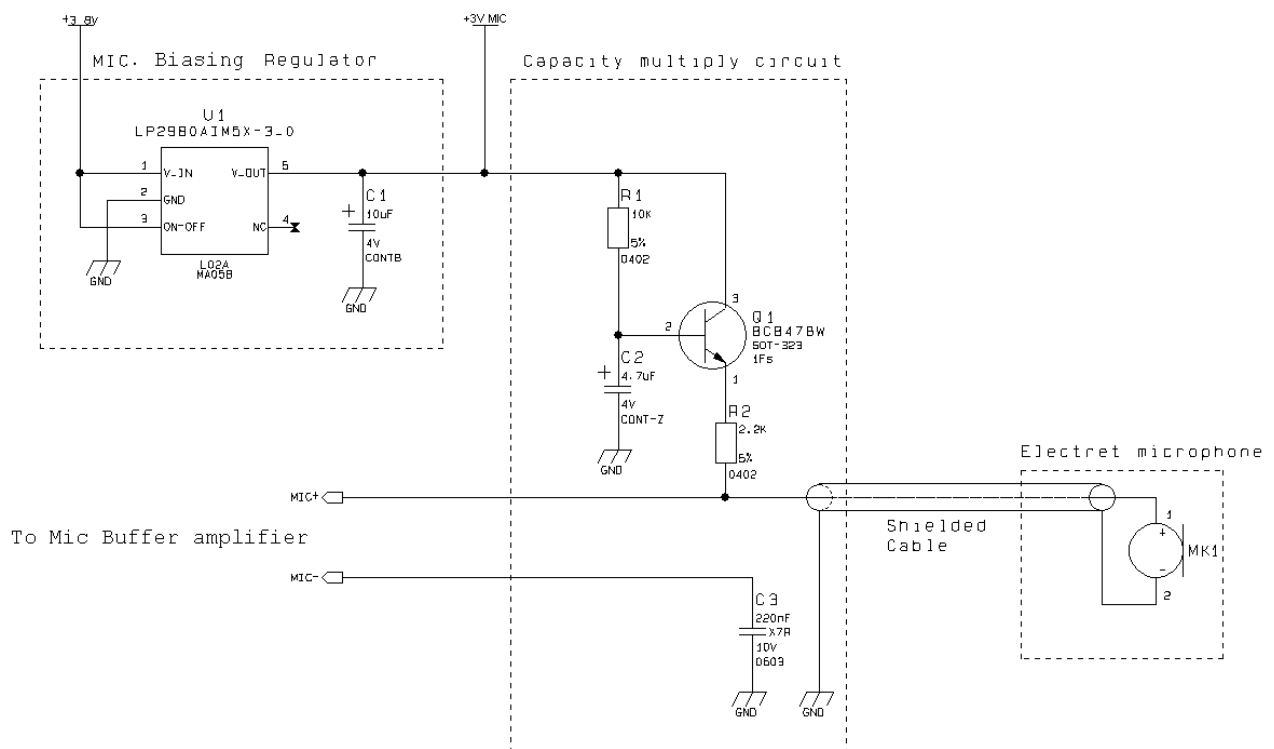
NOTE: The cable to the microphone should not be shielded; instead a twisted pair cable shall be used.


NOTE: The microphone sensitivity changes with the value of R2 and R3. Usually the microphones are characterized with 2kΩ biasing resistance, so try to keep the sum of R2 and R3 around 2kΩ. Refer to your microphone manufacturer for the mic. characteristics.


8.4.2 Unbalanced Microphone Biasing


The unbalanced microphone biasing voltage should be obtained from a dedicated voltage regulator, in order to eliminate the noise present on the power lines. This regulator can be the same for all the audio paths. The microphone should be supplied from a capacitor multiply circuit.

For example a circuit for the unbalanced microphone biasing can be:



 **NOTE:** In the unbalanced application the capacitor C3 shall be > 200nF otherwise the frequency response will be cut at low band frequencies (down to 300Hz). This capacitor can be placed close to the MIC- pad (MIC_HF- or MIC_MT- depending on the audio path chosen) or if possible it should be placed close to the shielded cable connector. If the ground return path is well designed, then it is possible to eliminate the C3 capacitor, provided the buffer is close to the mic. input.

 **NOTE:** The cable to the microphone should be shielded.

 **NOTE:** The microphone changes with the value of R2. Usually the microphone sensitivity is characterized with 2k Ω biasing resistance, so try to keep the value of R2 around 2k Ω . For mic. characteristics refer to the manufacturer.



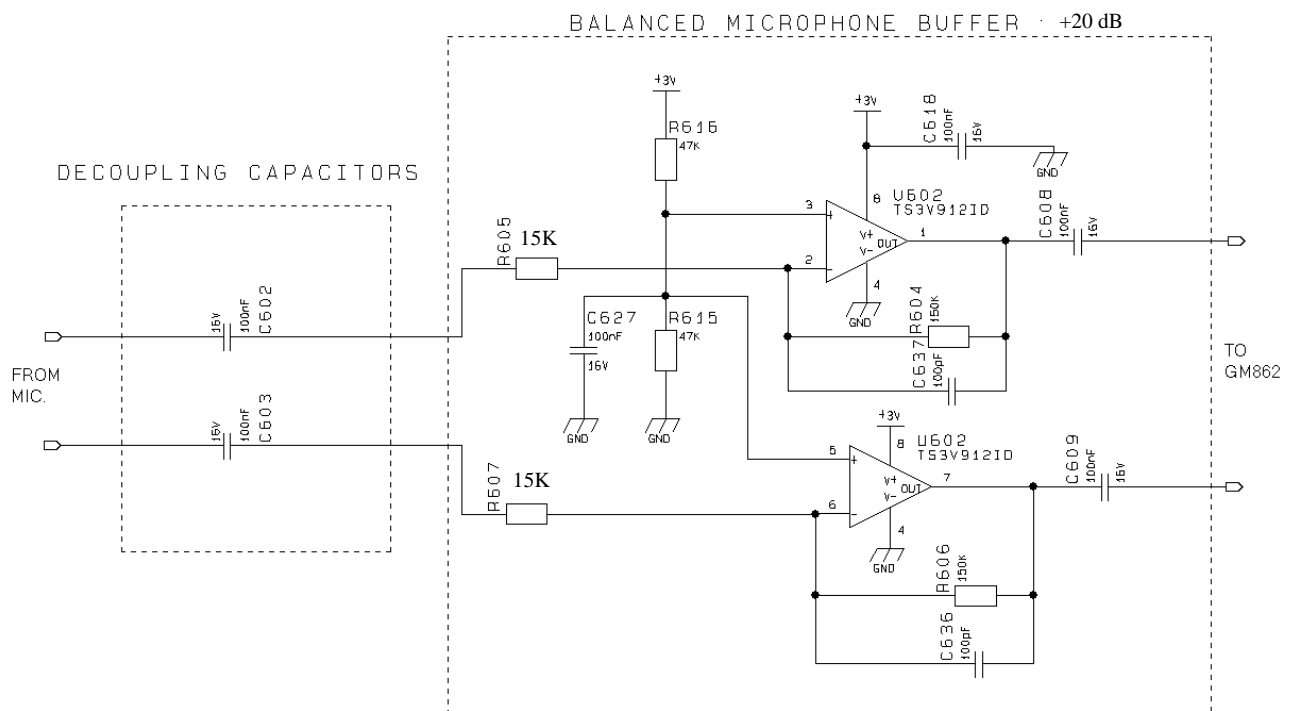
8.5 Microphone Buffering

As seen previously, a microphone shall be connected to the input pins of the GM862-QUAD / PY through a buffer amplifier that boosts the signal level to the required value.

Again the buffered microphone circuitry can be balanced or unbalanced: where possible it is always preferable a balanced solution. The buffering circuit shall be placed close to the microphone or close to the microphone wire connector.

8.5.1 Buffered Balanced Mic

A sample circuit can be:



This circuit has a gain of 10 times (+20 dB), and is therefore suited for the “*Mic_MT*” input if you have a microphone with a sensitivity close to the suggested one ($-45 \text{ dBV}_{\text{rms}}/\text{Pa}$). If your microphone has a different sensitivity or if the buffer is connected to the “*Mic_HF*” inputs, then a gain adjustment shall be done by changing resistors R604 and R606 (if the required value is not a standard one, you can change R605 e R607) and as a consequence the capacitors C636 and C637 to maintain the bandwidth 150-4000Hz (at -3dB).



The buffer gain is given by the formula:

$$Gain = \frac{R604}{R605} = \frac{R606}{R607}$$

The C636 and C637 capacitors are placed in order to cut off the gain at higher frequencies than the transmitted GSM band, the cutoff frequency (-3dB) should be 3500Hz in order to have -1dB at 3kHz. The cutoff frequency is given by the formula:

$$freq. = \frac{1}{2\pi * R604 * C637} = \frac{1}{2\pi * R606 * C636} \text{ [Hz]}$$



TIP: example of calculation.

Let's assume you have a microphone with a sensitivity of $-45 \text{ dBV}_{rms}/\text{Pa}$ and you want to use it in 1st differential microphone path ("Mic_MT" inputs) in "normal spoken" conditions at acoustic pressure of -4.7 dBPa .

As reported at page 33 , the electrical level output from the microphone will be :

$$\text{MicLevel} = (-45) + (-4.7) = -49.7 \text{ dB}_{Vrms}$$

corresponding to:

$$\text{MicVoltage} = 10^{(-49.7 / 20)} = 3.3 * 10^{-3} \text{ V}_{rms}$$

When the talker is screaming , we will have a signal of 330 mV_{rms} on the "Mic_MT" inputs due to a 20dB higher Mic Level (see TIP 1) with a buffer gain G_A :

$$G_A = 20 \log (\text{AmplifierOutput} / \text{MicVoltage}) = 20 \log (330 * 10^{-3}) / (3.3 * 10^{-3}) = 20 \log 10 = 20 \text{ dB}$$

The corresponding values for the resistors on the buffer could be (if we keep the input resistance $10 \text{ k}\Omega$)

$$R604 = R606 = \text{gain} * R607 = \text{gain} * R605 = 10 * 15 = 150 \text{ k}\Omega$$

The commercial values of $150 \text{ k}\Omega$ & $15 \text{ k}\Omega$ are then chosen.

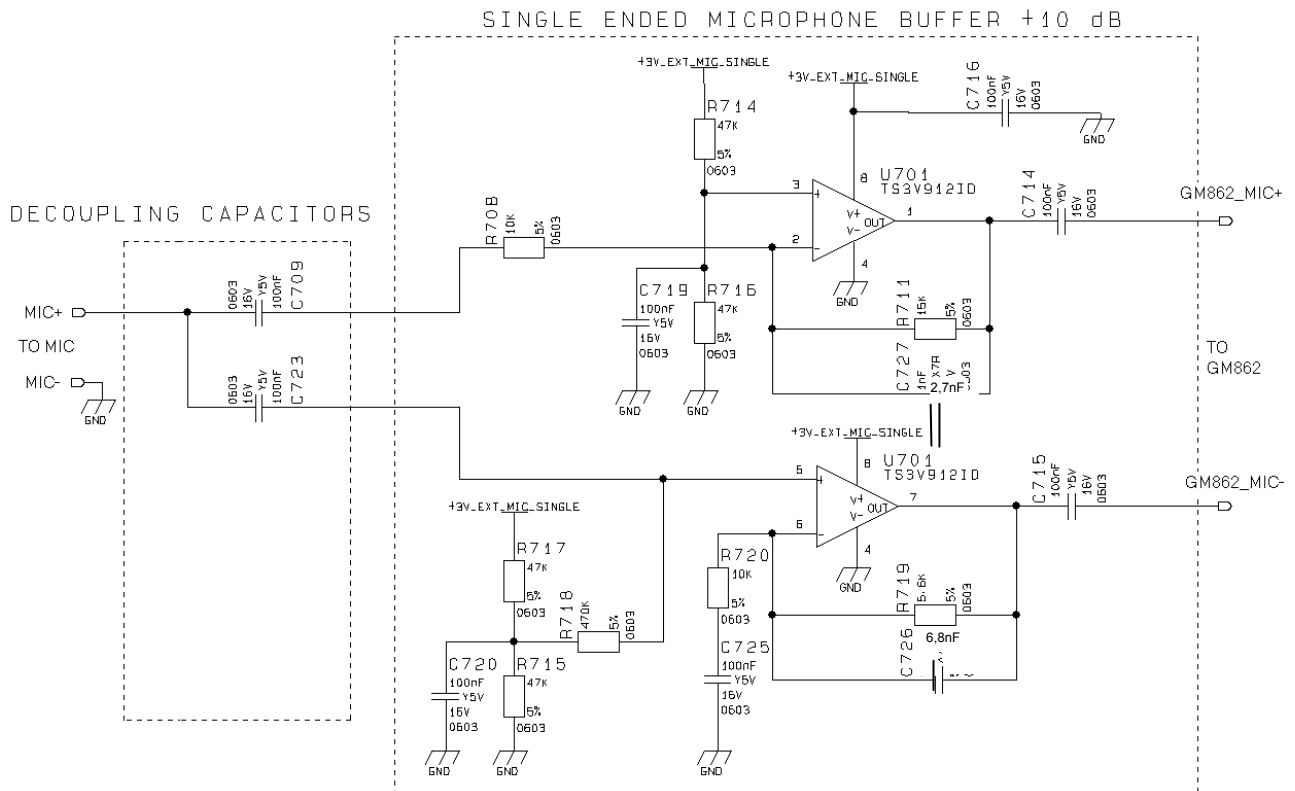
As a consequence the values of the capacitors C636 and C637 shall be:

$$C636 = C637 = 1 / (2\pi * 4000 * R606) = 265 * 10^{-12} \text{ F}$$

A commercial value of 270 pF gives a cutoff frequency of 3931 Hz with an error less than 1,8% .



8.5.2 Buffered Unbalanced (Single Ended) Microphone



The above schematic can be used for a single ended (*buffered unbalanced*) microphone; the required biasing circuitry is not included. Note also that the capacitor C3 is not needed. The gains of the two amplifiers are given by the formulas:

$$Gain(\text{not inverting buffer}) = 1 + \frac{R719}{R720} \qquad Gain(\text{inverting buffer}) = \frac{R711}{R708}$$

Assigning half of overall gain to each amplifier, you will obtain the requested gain because of doubling the microphone signal path; in fact by the use of two amplifiers (the upper as “inverting” and the lower as “not inverting” configuration) we obtain an additional +6dB gain (2 times) .

Remember: the “not inverting” amplifier section gain shall not be less than 1 .

Like for the balanced buffered microphone, the amplifier overall gain can be modify changing the value of resistor R719/R720 and R711 and as a consequence the capacitors C726 and C727. It is advisable to change R708 only if you have difficulty to find a commercial value for R711; in this case change R708 as little as possible.

The -3dB bandwidth is given by the approximated formula (considering C725 >> C726):

$$freq. = \frac{1}{2\pi * R719 * C726} = \frac{1}{2\pi * R711 * C727} \text{ [Hz]}$$



The buffer bandwidth at -3dB shall be 4KHz.

Note that the biasing of the operational amplifier is given for the inverting amplifier by the series divider R714-R715. The 100nF capacitor C719 is needed to filter the noise that could be coupled to that divider. For the not inverting operational amplifier the biasing is given by a different divider R715-R717 with the capacitor C720 and through a series resistor R718 of 470KΩ.



TIP: example of calculation.

Let's assume you have a microphone with a sensitivity of $-45\text{dBV}_{\text{rms}}/\text{Pa}$ and you want to use it in 2nd differential microphone path ("Mic_HF" inputs) in "normal spoken" conditions at acoustic pressure of -4.7dBPa .

As reported at page XX, the electrical level output from the microphone will be:

$$\text{MicLevel} = (-45) + (-4.7) = -49.7 \text{ dBV}_{\text{rms}}$$

but we have to consider 20dB loss due to the higher distance from the mouth of the talker (50cm) .

$$\text{MicLevel} = (-49.7) + (-20) = -69.7 \text{ dBV}_{\text{rms}}$$

corresponding to

$$\text{MicVoltage} = 10^{(-69.7/20)} = 0,33 * 10^{-3}$$

In order to have a signal of $1 \text{ mV}_{\text{rms}}$ at the "Mic_HF" inputs , as suggested at TIP "environment consideration " ,

the buffer must have a gain

$$G_A = \text{Mic_HF} / \text{MicVoltage} = (1 * 10^{-3}) / (0,33 * 10^{-3}) \quad \text{or } +10 \text{ dB}$$

Keeping in mind that "balancing the line will double the signal", to calculate the resistor values assign half of required gain G_A to each amplifier section . And therefore $G_S = 1,5$ times (or $+3,52\text{dB}$) .

Choosing as $10\text{k}\Omega$ as the input resistance, the corresponding values for the resistors on the buffer will be :

$$R711 = G_S * R708 = 1.5 * 10 = 15 \text{ k}\Omega$$

$$R719 = (G_S - 1) * R720 = (1.5 - 1) * 10 = 5 \text{ k}\Omega$$

The commercial values of $15\text{k}\Omega$ and $5.6\text{k}\Omega$ be accepted.



GM862-QUAD / PY Hardware User Guide

1vv0300748 Rev. 5 - 20/09/07

As a consequence of the assigned values of the resistors, the nominal values of C726 and C727 are:

$$C726 = 1 / (2\pi * 4000 * R719) = 7.10 * 10^{-9} F$$

$$C727 = 1 / (2\pi * 4000 * R711) = 2,65 * 10^{-9} F$$

*modified in **6,8nF** ($f_{c1}=4181\text{Hz}$) and **2,7nF** ($f_{c2}=3931\text{Hz}$) because of commercial values .*



9 OUTPUT LINES (Speaker)

9.1 Short Description

The Telit GM862-QUAD / PY provides two audio paths in receive section. Only one of the two paths can be active at a time, selectable by AXE hardware line or by AT command.

You must keep in mind the different audio characteristics of the receive blocks when designing:

→ the “**Ear_MT**” lines *EPN1* and *EPP1* are the *Differential Line-Out Drivers* ; they can drive an external amplifier or directly a **16 Ω earpiece** at -12dBFS (*) ;

→ the “**Ear_HF**” lines *EPPA1_2* and *EPPA2* are the *Fully Differential Power Buffers* ; they can directly drive a **16Ω speaker** in differential (*balanced*) or single ended (*unbalanced*) operation mode .

(*) *FS* : acronym of *Full Scale*. It is equal to 0dB, the maximum Hardware Analog Receive Gain of BaseBand Chip.

The “**Ear_MT**” audio path should be used for handset function, while the “**Ear_HF**” audio path is suited for hands-free function (car kit).

Both receiver outputs are B.T.L. type (Bridged Tie Load) and the OEM circuitry shall be designed bridged to reduce the common mode noise typically generated on the ground plane and to get the maximum power output from the device; however also a single ended circuitry can be designed for particular OEM application needs.



9.2 Output Lines Characteristics

“Ear_MT” Differential Line-out Drivers Path

- | | |
|------------------------------------|---------------------------------------------|
| • line coupling: | DC |
| • line type: | bridged |
| • output load resistance : | $\geq 14 \Omega$ |
| • internal output resistance: | 4 Ω (typical) |
| • signal bandwidth: | 150 - 4000 Hz @ -3 dB |
| • max. differential output voltage | 1310 mV _{rms} (typ, open circuit) |
| • differential output voltage | 328mV _{rms} /16 Ω @ -12dBFS |
| • SW volume level step | - 2 dB |
| • number of SW volume steps | 10 |

“Ear_HF” Power Buffers path

- | | |
|------------------------------------|--------------------------------------------|
| • line coupling: | DC |
| • line type: | bridged |
| • output load resistance : | $\geq 14 \Omega$ |
| • internal output resistance: | 4 Ω (>1,7 Ω) |
| • signal bandwidth: | 150 - 4000 Hz @ -3 dB |
| • max. differential output voltage | 1310 mV _{rms} (typ, open circuit) |
| • max. single ended output voltage | 656 mV _{rms} (typ, open circuit) |
| • SW volume level step | - 2 dB |
| • number of SW volume steps | 10 |



9.3 General Design Rules

There are several configurations for the audio output path, but the various design requirements can be grouped into three different categories:

- handset earphone (low power, typically a handset)
- hands-free earphone (low power, typically a earphone)
- car kit speakerphone (high power, typically a speaker)

The three groups have different power requirements, usually the first two applications need only few mW of power, which can be directly drained from the GM862-QUAD / PY pads, provided a suited speaker is used. This direct connect design is the cheaper and simpler solution and will be suited for the most of the earphone design requirements. There's no need to decouple the output ear lines if a suited earpiece is connected. For the last group, the speakerphone, a power amplifier is required to raise the output power up to 5-10W required in a car cabin application.

All the designs shall comply with the following guidelines:

- Where possible use a bridged earphone circuitry, to achieve the maximum power output from the device.
- Keep the earphone traces on the PCB and wires as short as possible.
- If your application requires a single ended earpiece and you want a direct connection, then leave one of the two output lines open and use only the other referred to ground. Remember that in this case the power output is 4 times lower than the bridged circuit and may not be enough to ensure a good voice volume.
- Make sure that the earphone traces in the PCB don't cross or run parallel to noisy traces (especially the power line)
- The cable to the speaker shall be a twisted pair with both the lines floating for the bridged output type, shielded with the shield to ground for the single ended output type.

9.3.1 Noise Filtering

The I/O of the PCB should have a noise filter close to the connector, to filter the high frequency GSM noise. The filter can be a Π formed by 2 capacitor and a inductance, with the one capacitor of $39pF - 0603$ case, and the other capacitor of $1nF - 0603$; the inductance shall have a value of $39\mu H$.



9.4 Handset Earphone Design

As seen previously, a 16Ω earpiece can be directly connected to the output pads EAR_MT+ and EAR_MT- of the GM862-QUAD / PY.

This solution is often the more cost effective, reducing the components count to a minimum. There are several limitations to the use of this solution: speakers direct connect imposes the speaker characteristics to be almost exactly the suggested ones, otherwise the power output may be reduced (if speaker impedance is bigger than 16Ω) or the GM862-QUAD / PY ear port may be damaged (if speaker impedance is less than 15Ω).

The other limitation of the speaker direct connection is the power output capability of the GM862-QUAD / PY which is limited and for some particular applications may not be enough.

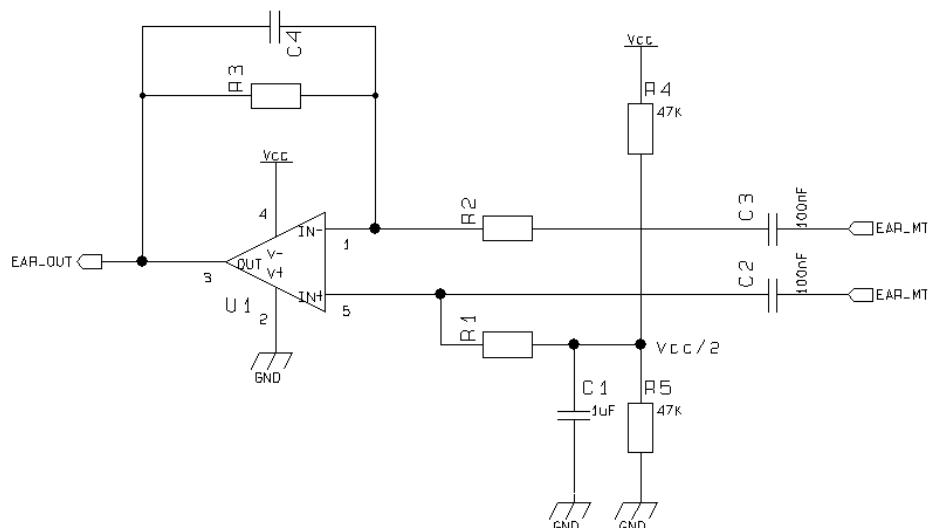
For these reasons, when the power output of the GM862-QUAD / PY is not enough or if the speaker characteristics are different from the suggested, then it is preferable to use an amplifier to increase the power and current output capabilities.

Again the output from the GM862-QUAD / PY is bridged and both lines should be used, where possible, as inputs to the power amplifier. This ensures a higher common mode rejection ratio, reducing the GSM current busts noise on the speaker output.

In this case the "EAR_MT" lines from the GM862-QUAD / PY should be AC coupled with a ceramic capacitor of 100nF (or bigger).

It is always desirable to have a mute control on the amplifier, in order to turn it off while the device is not sending signal to the output, in this manner the amplifier background noise which may be audible during idle conditions is cut off.

A principle schematic may be:

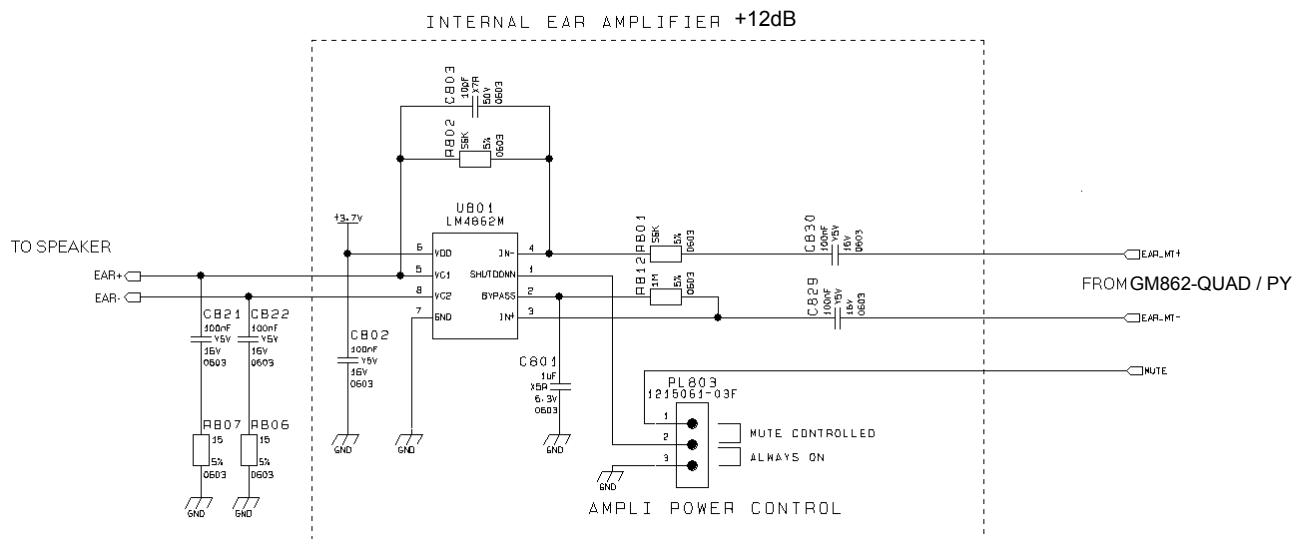


The resulting gain and high pass cut can be obtained with the formula:

$$Gain = \frac{R3}{R2}$$

$$freq. = \frac{1}{2\pi * R3 * C4} [Hz]$$

And an example of internal Ear amplifier could be:



Some amplifier require a low impedance load at high frequency in order to avoid auto oscillation, this can be made with a capacitor (100nF) in series with a resistor (15Ω).

When designing your application, remember to provide an adequate bypass capacitor to the amplifier and place it close to the power input pin of the IC, keeping the traces as short as possible.

9.5 Hands-Free Earphone (Low Power) Design

The same design considerations made for the handset are valid for the hands-free earphone.



9.6 Car Kit Speakerphone Design

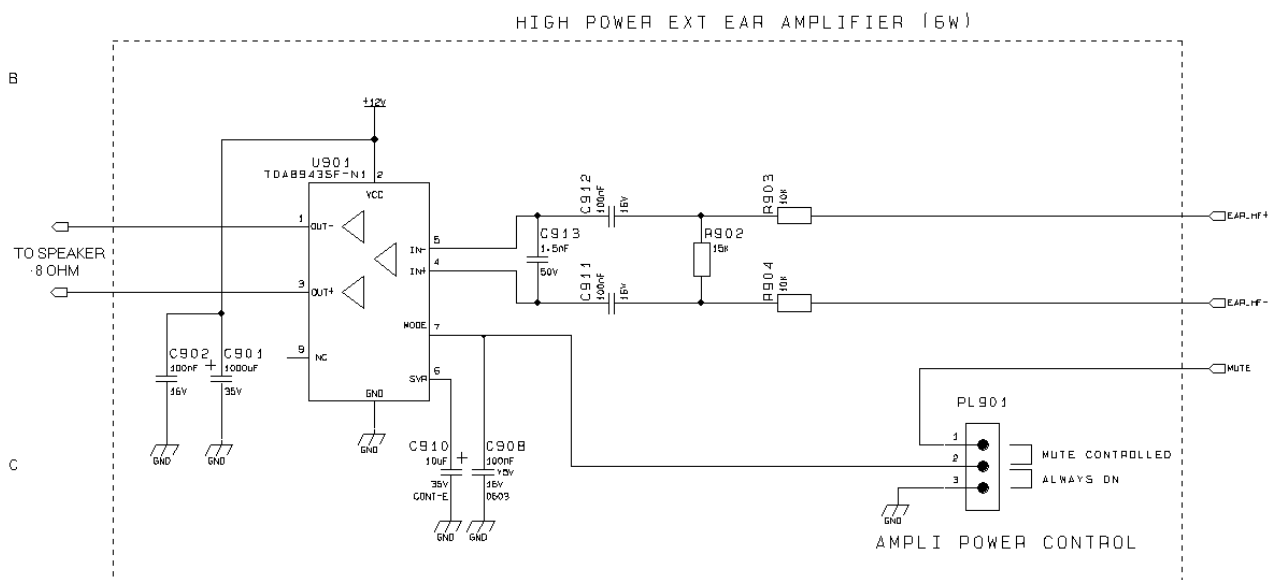
For the car kit speaker phone function the power output requirement is usually at least 4W, therefore an amplifier is needed to boost the *GM862-QUAD / PY* output.

The design of the amplifier shall comply with the following guidelines:

- The input to the amplifier MUST be taken from the “*Ear_HF*” audio path of the *GM862-QUAD / PY*, because of its echo canceller parameters suited to a car cabin use.
- The amplifier shall have a gain of 30-40 times (29-32 dB) to provide the desired output power of 5-10W with the signal from the *GM862-QUAD / PY* “*Ear_HF*” audio output lines.
- If the amplifier has a fixed gain then it can be adjusted to the desired value by reducing the input signal with a resistor divider network.
- The amplifier shall have a mute control to be used while not in conversation. This results in two benefits: eliminating the background noise when not in conversation and saving power.
- The power to the amplifier should be decoupled as much as possible from the *GM862-QUAD / PY* power supply, by either keeping separate wires and placing bypass capacitors of adequate value close to the amplifier power input pads.
- The biasing voltage of the amplifier shall be stabilized with a low ESR (e.g. a tantalum) capacitor of adequate value.

NOTE: The *GM862-QUAD / PY* audio path connected to the car kit hands-free amplifier MUST be “*Ear_HF*” one, otherwise the echo cancellation will not be done due to the difference in the echo canceller characteristics of the *GM862-QUAD / PY* internal audio path from the external audio path.

Example of car kit amplifier schematic.



10 General Purpose I/O

The general purpose I/O pins can be configured to act in three different ways:

- input
- output
- alternate function (internally controlled)

The following GPIO are available on the GM862-QUAD/PY:

Pin	Signal	I/O	Function	Type	Input / output current	Default State	ON_OFF state	State during Reset	Note
34	GPI1	I	GPI01 Configurable GPIO	CMOS 2.8V	1uA / 1mA	INPUT	LOW		
28	GPO2	O	GPO02 Configurable GPIO	CMOS 2.8V	1uA / 1mA	OUTPUT	LOW		Open Collector Alternate function (JDR)
46	GPIO3	I/O	GPIO03 Configurable GPIO	CMOS 2.8V	1uA / 1mA	INPUT	HIGH	HIGH	47K Pull Up
47	GPIO4	I/O	GPIO04 Configurable GPIO	CMOS 2.8V	1uA / 1mA	INPUT	HIGH	HIGH	4.7K Pull Up Alternate function (RF Transmission Control)
48	GPIO5	I/O	GPIO05 Configurable GPIO	CMOS 2.8V	1uA / 1mA	INPUT	LOW		Alternate function (RFTXMON)
49	GPIO6	I/O	GPIO06 Configurable GPIO	CMOS 2.8V	1uA / 1mA	INPUT	fig. 01	HIGH	Alternate function (ALARM)
50	GPIO7	I/O	GPIO07 Configurable GPIO	CMOS 2.8V	1uA / 1mA	INPUT	LOW		Alternate function (BUZZER)
32	GPIO8	I/O	GPIO08 Configurable GPIO	CMOS 2.8V	1uA / 1mA	INPUT	LOW		
34	GPIO9	I/O	GPIO09 Configurable GPIO	CMOS 2.8V	1uA / 1mA	INPUT	LOW		
38	GPIO10	I/O	GPIO10 Configurable GPIO	CMOS 2.8V	1uA / 1mA	INPUT	LOW		
40	GPIO11	I/O	GPIO11 Configurable GPIO	CMOS 2.8V	1uA / 1mA	INPUT	HIGH	HIGH	4.7K Pull Up
42	GPIO12	I/O	GPIO12 Configurable GPIO	CMOS 2.8V	1uA / 1mA	INPUT	HIGH	HIGH	47K Pull Up
44	GPIO13	I/O	GPIO13 Configurable GPIO	CMOS 2.8V	1uA / 1mA	INPUT	LOW		

Input pins can only be read and report the digital value (high or low) present on the pin at the read time; output pins can only be written or queried and set the value of the pin output; an alternate function pin is internally controlled by the GM862-QUAD/PY firmware and acts depending on the function implemented.



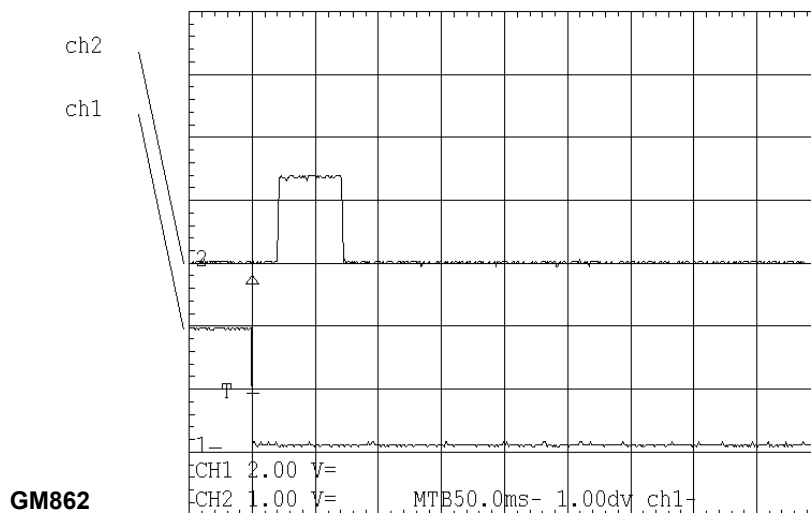
Not all GPIO pins support all these three modes:

- GPIO1 is an INPUT ONLY
- GPIO2 is an OUTPUT ONLY (open collector)
- GPIO3, GPIO8 to GPIO13 support both input or output mode but not Alternate function.
- GPIO4 supports all three modes and can be input, output, RF Transmission Control (Alternate function)
- GPIO5 supports all three modes and can be input, output, RFTXMON output (Alternate function)
- GPIO6 supports all three modes and can be input, output, ALARM output (Alternate function)
- GPIO7 supports all three modes and can be input, output, BUZZER output (Alternate function)

All GPIO pins except from GPIO1 and GPIO2 that are buffered with a transistor, are 2.8V CMOS signals.

fig. 01

ch1: ON_OFF (2sec)
ch2: GPIO 06 [bis]



10.2 Using a GPIO pin as INPUT

The GPIO pins, when used as inputs, can be connected to a digital output of another device and report its status, provided this device has interface levels compatible with the 2.8V CMOS levels of the GPIO.

If the digital output of the device to be connected with the GPIO input pin has interface levels different from the 2.8V CMOS, then it can be connected to GPIO1 or can be buffered with an open collector transistor, provided a 47K Ω pull-up to 2.8V.

10.3 Using the RF Transmission Control GPIO4

The GPIO4 pin, when configured as RF Transmission Control Input, permits to disable the Transmitter when the GPIO is set to Low by the application.

10.4 Using the RFTXMON Output GPIO5

The GPIO5 pin, when configured as RFTXMON Output, is controlled by the GM862-QUAD/PY module and will rise when the transmitter is active and fall after the transmitter activity is completed.

For example, if a call is started, the line will be HIGH during all the conversation and it will be again LOW after hanged up.

The line rises up 300ms before first TX burst and will become again LOW from 500ms to 1sec after last TX burst.

10.5 Using the Alarm Output GPIO6

The GPIO6 pin, when configured as Alarm Output, is controlled by the GM862-QUAD / PY module and will rise when the alarm starts and fall after the issue of a dedicated AT command.

This output can be used to power up the GM862-QUAD / PY controlling microcontroller or application at the alarm time, giving you the possibility to program a timely system wake-up to achieve some periodic actions and completely turn off either the application and the GM862-QUAD / PY during sleep periods, dramatically reducing the sleep consumption to few μ A.

In battery powered devices this feature will greatly improve the autonomy of the device.



NOTE: During RESET the line is set to HIGH logic level.

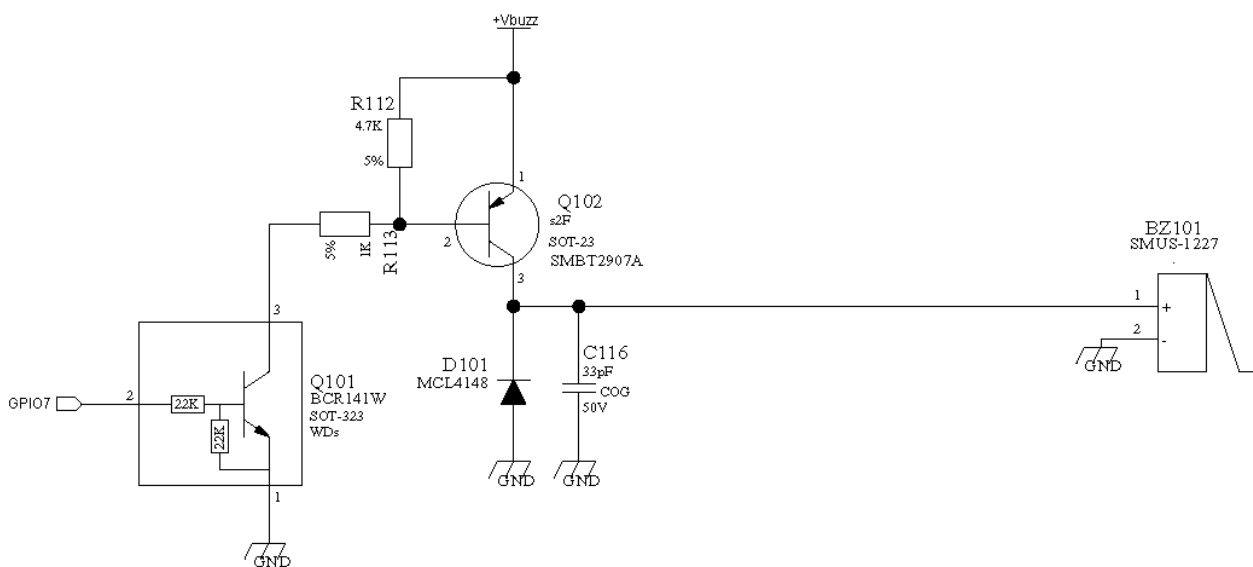


10.6 Using the Buzzer Output GPIO7

The GPIO7 pin, when configured as Buzzer Output, is controlled by the GM862-QUAD / PY module and will drive with appropriate square waves a Buzzer driver.

This permits to your application to easily implement Buzzer feature with ringing tones played at the call incoming, on SMS incoming or simply playing a tone when needed by your application.

A sample interface scheme is included below to give you an idea of how to interface a Buzzer to the GPIO7:



NOTE: To correctly drive a buzzer a driver must be provided, its characteristics depend on the Buzzer and for them refer to your buzzer vendor.



11 ADC section

11.1 ADC converter

11.1.1 Description

The GM862-QUAD / PY module provides a Analog to Digital Converter. The input line (named ADC_IN1) is available on pin #6 of the B2B connector of the module and on pin #19 of PL103 on EVK2 Board.

The on board A/D is 11-bit converter. It is able to read a voltage level in the range of 0÷2 volts applied on the ADC pin input, store and convert it into 11 bit word.

	Min	Max	Units
Input Voltage range	0	2	Volt
AD conversion	-	11	bits
Resolution	-	< 1	mV

11.1.2 Using ADC Converter

An AT command is available to use the ADC function.

The command is **AT#ADC=1,2**

The read value is expressed in mV

Refer to SW User Guide or to GM862-QUAD / PY AT Commands User Guide for the full description of this function.



12 Indication of network service availability

The STAT_LED pin status shows information on the network service availability and Call status. The pin is an Open Collector output where it is possible to directly connect a LED to show information on the network service availability and Call status.

Therefore, the status indicated in the following table is reversed with respect to the pin status.

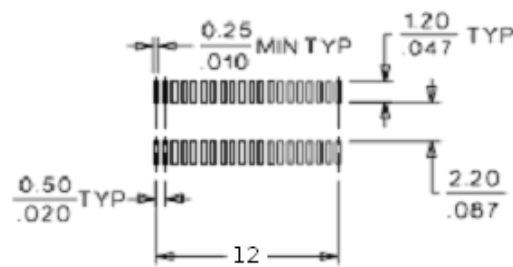
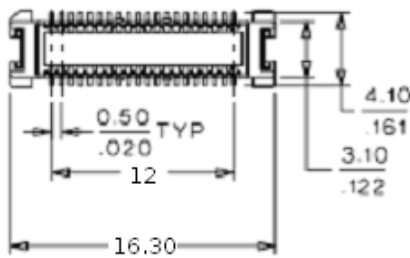
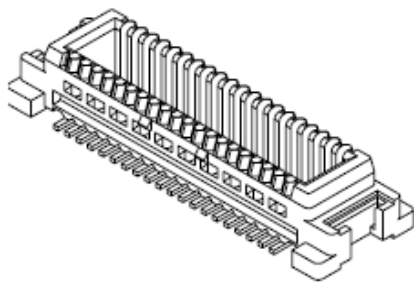
LED status	Device Status
permanently off	device off
fast blinking (period 1s, Ton 0,5s)	Net search / Not registered / turning off
slow blinking (period 3s, Ton 0,3s)	Registered full service
permanently on	a call is active



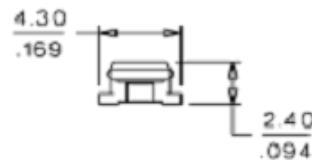
13 Mounting the GM862 Modules on your Board

In order to electrically connect your board to the [Telit GM862-QUAD/PY modules](#), use a **CSTP 2x25 pin vertical SMD SCH-SCH Molex 53748 - 0504 (female, low profile)** as a counterpart to the **CSTP 50 pin vertical SMD Molex 52991-0508 (male)** of your [Telit GM862-QUAD/PY modules](#).
When mounting the [Telit GM862-QUAD/PY modules](#) on your board, take care of soldering the GM862 shielding reeds on a ground plane or signal.

Molex 53748-0504 (female, low profile) Connector LAY-OUT



PCB LAYOUT: COMPONENT SIDE



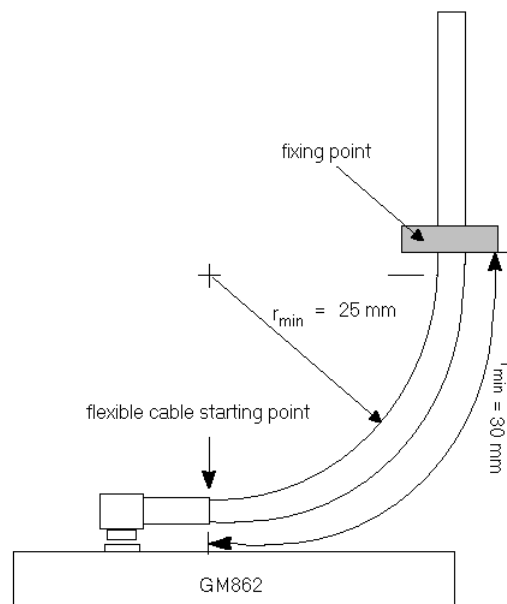
NOTE: be very careful when connecting the *Telit GM862 module* RF connector. The *Telit GM862 module* RF connector can be damaged if not connected with the proper antenna RF connector. The minimum number of insertion cycles is recommended.

13.1 Antenna Coaxial Cable Fixing

The following constraints must be respected in the *Telit GM862 -QUAD/PY modules* antenna cable connection:

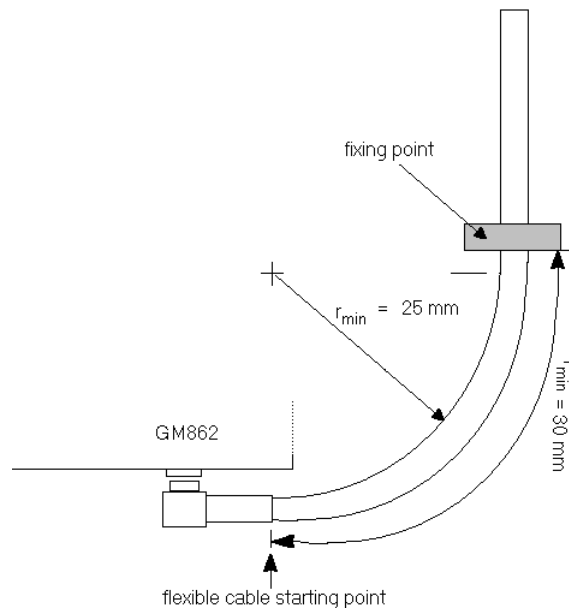
- The fixing point of the coaxial cable must not be placed too close to the antenna connector of the *GM862 module*, leaving at least 30mm of flexible cable between the fixed point and the plug end.
- The fixing point must be at the same height of the *GM862 module* antenna connector, eventually using a wedge between the PCB and the cable if it is directly fixed to the PCB.
- The flexible cable must never be bent with a radius lower than 25mm (RG174 cable).
- The cable must be a RG174 type or more flexible ones.

The following pictures explain these constraints:



- Angle connector fixing example -





- Angle connector fixing example 2 -

NOTE: in the examples the cable is always bent, this is not a constrain. If the installation does not require it, then the cable can be kept straight, ensuring that the fixing is without sliding.

13.2 Precautions

- The plug should be inserted in the connector only after the installation of the [Telit GM862-QUAD/PY](#) in the board. This is to prevent accidental breaking of the antenna connection during the transport.
- The coaxial cable must be fixed at least in one point, without sliding possibilities.
- The plug insertion/removal must be done axially with the female connector of the GM862, keeping lateral strains to a minimum.
- The insertion/crimping pull out force must be less than 15N.
- The Hole's diameter for GM862 shielding reed soldering is: (1,5 +/- 0,05) mm



15 SAFETY RECOMMENDATIONS

READ CAREFULLY

Be sure the use of this product is allowed in the country and in the environment required. The use of this product may be dangerous and has to be avoided in the following areas:

- Where it can interfere with other electronic devices in environments such as hospitals, airports, aircrafts, etc
- Where there is risk of explosion such as gasoline stations, oil refineries, etc

It is responsibility of the user to enforce the country regulation and the specific environment regulation.

Do not disassemble the product; any mark of tampering will compromise the warranty validity.

We recommend following the instructions of the hardware user guides for a correct wiring of the product. The product has to be supplied with a stabilized voltage source and the wiring has to be conforming to the security and fire prevention regulations.

The product has to be handled with care, avoiding any contact with the pins because electrostatic discharges may damage the product itself. Same cautions have to be taken for the SIM, checking carefully the instruction for its use. Do not insert or remove the SIM when the product is in power saving mode.

The system integrator is responsible of the functioning of the final product; therefore, care has to be taken to the external components of the module, as well as of any project or installation issue, because the risk of disturbing the GSM network or external devices or having impact on the security. Should there be any doubt, please refer to the technical documentation and the regulations in force.

Every module has to be equipped with a proper antenna with specific characteristics. The antenna has to be installed with care in order to avoid any interference with other electronic devices and has to guarantee a minimum distance from the body (20 cm). In case of this requirement cannot be satisfied, the system integrator has to assess the final product against the SAR regulation.

The European Community provides some Directives for the electronic equipments introduced on the market. All the relevant information's are available on the European Community website:

<http://europa.eu.int/comm/enterprise/rte/dir99-5.htm>

The text of the Directive 99/05 regarding telecommunication equipments is available, while the applicable Directives (Low Voltage and EMC) are available at:

http://europa.eu.int/comm/enterprise/electr_equipment/index_en.htm



16 Document Change Log

Revision	Date	Changes
ISSUE#0	16/10/06	Release First ISSUE# 0
ISSUE#1	24/10/06	Added chapter 11 (Conformity assessment Issues)
ISSUE#2	19/12/06	Modified 3.3.1, 4.1, 4.2, 4.3, 6.1, 6.2.14
ISSUE#3	08/01/07	Modified 3.3.1; removed chapter 13 (camera)
ISSUE#4	02/07/07	Updated DISCLAIMER, Added note on charger (CFUN4 and ON_OFF), Added Power consumptions table, Added new table for GPIO status in Reset and Power on, added RFTXMON timing, Switching description modified in "+ 12V input Source Power Supply Design Guidelines", Added Alternate Function for GPIO4; modified absolute maximum ratings; added GPIO2 Alternate function description; added safety recommendations; removed schematic for stat led; updated schematics for On off and Reset;
ISSUE#5	20/09/07	Updated 8.1 Microphone Paths Characteristic and Requirements paragraph

